

TECHNICAL MANUAL

**ORGANIZATIONAL, DIRECT SUPPORT AND
GENERAL SUPPORT MAINTENANCE MANUAL
REPAIR PARTS AND SPECIAL TOOLS LIST**

**DETECTOR, BATCH INTERFACE
(ITT BARTON MODEL T276.0001.Z)
NSN 6680-01-035-5553**

HEADQUARTERS, DEPARTMENT OF THE ARMY

24 JUNE 1980

**Organizational, Direct Support and General Support
 Maintenance Manual
 Repair Parts and Special Tools List**

**DETECTOR, BATCH INTERFACE
 (ITT BARTON MODEL T276.0001.Z)
 NSN 6680-01-035-5553**

REPORTING ERRORS AND RECOMMENDING IMPROVEMENTS

You can help improve this manual. If you find any mistake or if you know of a way to improve the procedures, please let us know. Mail your letter, DA Form 2028 (Recommended Changes to Publications and Blank Forms), or DA Form 2028-2 located in the back of this manual direct to: Commander, U. S. Army Troop Support & Aviation Material Readiness Command, ATTN: DRSTS-MTPS, 4300 Goodfellow Boulevard, St. Louis, MO 63120. A reply will be furnished directly to you.

CURRENT AS OF 3 MARCH 1980

Table of Contents

			Page	Illus Figure
SECTION	I	Introduction	1	
	II.	Repair Parts List		
Group	01	Housing Assembly		
		Batch Interface Detector Assembly	8	1
		Tripod Assembly	11	2
		Card Rack Case Assembly.....	14	3
Group	02	Electrical Components		
		Card Rack Assembly.....	17	4
		Power Supply Assembly.....	21	5
Group	03	Receiver/Converter Assembly		
		Transformer Assembly	23	6
		Heat Sink Assembly	25	7
		Power Supply Subassembly	27	8
		Current Output Assembly	31	9
		Output Driver Assembly	35	10
		Phase Lock Loop Assembly	37	11
		Loop Input and Filter Assembly	39	12
		KT Assembly.....	43	13
		Scale Assembly	45	14
		Preset Up/Down Counter Assembly.....	47	15
		Mounting Panel	49	16

			Page	Illus Figure
Group	04	Recorder Assembly		
		Recorder Cover Assembly.....	51	17
		Latch Bracket Assembly.....	53	18
Group	05	Detector Head Assembly		
		Batch Interface Detector System Assembly.....	55	19
Section	III.	Special Tools List (Not applicable)		
	IV.	National Stock Number and Part Number Index	56	

Section I. INTRODUCTION

1. Scope. This manual lists spares and repair parts; special tools; special test, measurement, and diagnostic equipment (TMDE), and other special support equipment required for performance of organizational, direct support, and general support depot maintenance of the Detector, Batch Interface. It authorizes the requisitioning and issue of spares and repair parts as indicated by the source and maintenance codes.

2. General. This Repair Parts and Special Tools List is divided into the following sections:

a. Section II. Repair Parts List. A list of spares and repair parts authorized for use in the performance of maintenance. The list also includes parts which must be removed for replacement of the authorized parts. Parts lists are composed of functional groups in ascending numeric sequence, with the parts in each group listed in figure and item number sequence. Bulk materials are listed in NSN sequence.

b. Section III. Special Tools List. A list of special tools, special TMDE, and other special support equipment authorized for the performance of maintenance.

c. Section IV. National Stock Number and Part Number Index. A list, in National Item Identification Number (NIIN) sequence, of all National Stock Numbers (NSN) appearing in the listings, followed by a list in alphanumeric sequence, of all part numbers appearing in the listings. National stock numbers and part numbers are cross referenced to each illustration figure and item number appearance. This index is followed by a cross-reference list of reference designators to figure and item numbers.

3. Explanation of Columns.

a. Illustration. This column is divided as follows:

(1) Figure Number. Indicates the figure number of the illustration on which the item is shown.

(2) Item Number. The number used to identify item called out in the illustration.

b. Source, Maintenance and Recoverability (SMR) Codes.

(1) Source Code. Source codes indicate the manner of acquiring support items for maintenance, repair or overhaul of end items. Source codes are entered in the first and second positions of the Uniform SMR Code format as follows:

Code	Definition
PA	Item procured and stocked for anticipated or known usage.
PB	Item procured and stocked for insurance purposes because essentially dictates that a minimum quantity be available in the supply system.
PC	Item procured and stocked and which otherwise would be coded PA except that it is deteriorative in nature.
PD	Support item, excluding support equipment, procured for initial issue or outfitting and stocked only for subsequent or additional initial issues or out-fittings. Not subject to automatic replenishment.
PE	Support equipment procured and stocked for initial issue or outfitting to specified maintenance repair activities.
PF	Support equipment which will not be stocked but which will be centrally procured on demand.
PG	Item procured and stocked to provide for sustained support for the life of the equipment. It is applied to an item peculiar to the equipment which, because of probable discontinuance or shutdown of production facilities, would prove uneconomical to reproduce at a later time.
KD	An item of a depot overhaul/repair kit and not purchased separately. Depot kit defined as a kit that provides items required at the time of overhaul or repair.
KF	An item of a maintenance kit and not purchased separately. Maintenance kit defined as a kit that provides an item that can be replaced at organizational or intermediate levels of maintenance.

Code	Definition
KB	Item included in both a depot overhaul/repair kit and a maintenance it.
MO	Item to be manufactured or fabricated at the organizational level.
MF	Item to be manufactured or fabricated at the direct support maintenance level.
MH	Item to be manufactured or fabricated at the general support maintenance level.
MD	Item to be manufactured or fabricated at the depot support maintenance level.
AO	Item to be assembled at organizational level.
AF	Item to be assembled at the direct support maintenance level.
AH	Item to be assembled at general support maintenance level.
AD	Item to be assembled at depot maintenance level.
XA	Item is not procured or stocked because the requirements for the item will result in the replacement of the next higher assembly.
XB	Item is not procured or stocked. If not available through salvage, requisition.
XC	Installation drawing, diagram, instruction sheet, field service drawing, that is identified by manufacturer's part number.
XD	A support item that is not stocked. When required, item will be procured through normal supply channels.

NOTE

Cannibalization or salvage may be used as a source of supply for any items source coded above except those coded XA and XD.

(2) Maintenance Code. Maintenance codes are assigned to indicate the levels of maintenance authorized to USE and REPAIR support items. The maintenance codes are entered in the third and fourth positions of the Uniform SMR Code format as follows:

(a) The maintenance code entered in the third position will indicate the lowest maintenance level authorized to remove, replace, and use the support item.

The maintenance code entered in the third position will indicate one of the following levels of maintenance:

Code	Definition
C	Crew or operator maintenance performed within organizational maintenance.
O	Support item is removed, replaced, used at the organizational level.
I	Support item is removed, replaced, used by the direct support element of integrated direct support maintenance.
F	Support item is removed, replaced, used at the direct support level.
H	Support item is removed, replaced, used at the general support level.
D	Support items that are removed, replaced used at depot, mobile depot, or specialized repair activity only.

NOTE

Codes "I" and "F" will be considered the same by direct support units.

(b) The maintenance code entered in the fourth position indicates whether the item is to be repaired and identifies the lowest maintenance level with the capability to perform complete repair (i.e., all authorized maintenance functions). This position will contain one of the following maintenance codes:

Code	Application/Explanation
O	The lowest maintenance level capable of complete repair of the support item is the organizational level.
F	The lowest maintenance level capable of complete repair of the support item is the direct support level.
H	The lowest maintenance level capable of complete repair of the support item is the general support level.
D	The lowest maintenance level capable of complete repair of the support item is the depot level.
L	Repair restricted to designated, Specialized Repair Activity.
Z	Nonreparable. No repair is authorized.

Code	Application/Explanation
B	No repair is authorized. The item may be reconditioned by adjusting, lubricating, etc., at the user level. No parts or special tools are procured for the maintenance of this item.

(3) Recoverability Code. Recoverability codes are assigned to support items to indicate the disposition action on unserviceable items. The recoverability code is entered in the fifth position of the Uniform SMR Code format as follows:

Recoverability Code	Definition
Z	Nonreparable item. When unserviceable, condemn and dispose at the level indicated in position 3.
O	Reparable item. When uneconomically reparable, condemn and dispose at organizational level.
F	Reparable item. When uneconomically reparable, condemn and dispose at the direct support level.
H	Reparable item. When uneconomically reparable, condemn and dispose at the general support level.
D	Reparable item. When beyond lower level repair capability, return to depot. Condemnation and disposal not authorized below depot level.
L	Reparable item. Repair, condemnation, and disposal not authorized below depot/specialized repair activity level.
A	Item requires special handling or condemnation procedures because of specific reasons (i.e., precious metal content, high dollar value, critical material or hazardous material). Refer to appropriate manuals/directives for specific instructions.

c. National Stock Number. Indicates the National stock number assigned to the item and which will be used for requisitioning purposes.

d. Part Number. Indicates the primary number used by the manufacturer which controls the design and characteristics of the item by means of its engineering drawings, specifications standards, and inspection requirements to identify an item or range of items.

NOTE

When a stock numbered item is requisitioned, the repair part received may have a different part number than the part being replaced.

e. Federal Supply Code for Manufacturer (FSCM). The FSCM is a 5-digit numeric code listed in SB 708-42 which is used to identify the manufacturer, distributor, or Government agency, etc.

f. Description. Indicates the Federal item name and, if required, a minimum description to identify the item. Items that are included in kits and sets are listed below the name of the kit or set, with the quantity of each item in the kit or set indicated in the quantity incorporated in unit column. When the part to be used differs between serial numbers of the same model, the effective serial numbers are shown as the last line of the description. In the Special Tools List, the initial basis of issue (BOI) appears as the last line in the entry for each special tool, special TMDE, and other special support equipment. When density of equipments supported exceeds density spread indicated in the basis of issue, the total authorization is increased accordingly.

g. Unit of Measure (U/M). Indicates the standard of the basic quantity of the listed item as used in performing the actual maintenance function. This measure is expressed by a two-character alphabetical abbreviation (e.g., ea, in., pr, etc.). When the unit of measure differs from the unit of issue, the lowest unit of issue that will satisfy the required units of measure will be requisitioned.

h. Quantity Incorporated in Unit. Indicates the quantity of the item used in the breakout shown on the illustration figure, which is prepared for a functional group, subfunctional group, or an assembly. A "V" appearing in this column in lieu of a quantity indicates that no specific quantity is applicable (e.g., shims, spacers, etc.).

4. Special Information.

a. Usable on codes are shown in the description column. Uncoded items are applicable to all models.

b. Repair parts kits and gasket sets appear as the last entries in the repair parts listing for the figure in which its parts are listed as repair parts or are listed at the end of the repair parts listing for the last figure containing parts of the kits.

c. The following publication pertains to the batch interface detector and its components:

TM 5-6680-310-14 Operator, Organizational,
Direct Support and General
Support Maintenance
Manual

5. How to Locate Repair Parts.

a. When National Stock Number or Part Number is Unknown:

(1) **First.** Using the table of contents, determine the functional group within which the repair part belongs. This is necessary since illustrations are prepared for functional groups, and listings are divided into the same groups.

(2) **Second.** Find the illustration covering the functional group to which the repair part belongs.

(3) **Third.** Identify the repair part on the illustration and note the illustration figure number and item number of the repair part.

(4) **Fourth.** Using the repair parts listing, find the figure and item number noted on the illustration.

b. When National Stock Number or Part Numbers Known.

(1) **First.** Using the Index of National Stock Numbers and Part Numbers, find the pertinent National

stock number or part number. This index is in NIIN sequence followed by a list of part numbers in alphanumeric sequence, cross-referenced to the illustration figure number and item number.

(2) **Second.** After finding the figure and item number, locate the figure and item number in the repair parts list.

6. Abbreviations.

Abbreviations	Explanation
AC	Alternating Current
ASSY	Assembly
CONT	Control
CYL	Cylinder
EA	Each
ELECT	Electrical
EVAP	Evaporator
FT	Feet/Foot
HEX	Hexagon
IDENT	Identification
INSTRUCT	Instructions
L	Left
LH	Left Hand
OSE	Opposite Shaft End
PLT	Plate
PRES	Pressure
QD	Quick Disconnect
R	Right
REF	Reference
RH	Right Hand
SE	Shaft End
TB	Tube
TEMP	Temperature

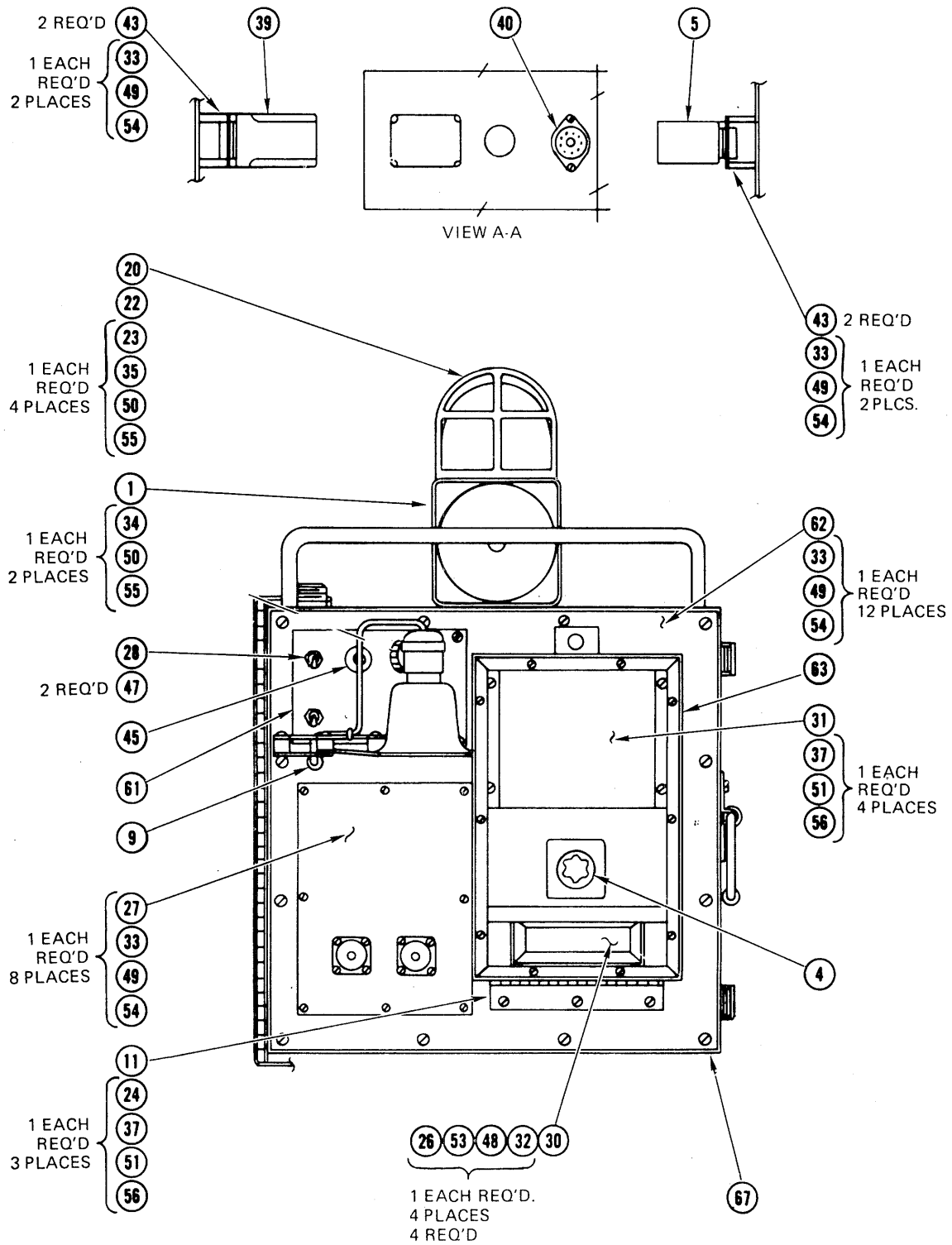


Figure 1. Batch Interface Detector Assembly (Sheet 1 of 2)

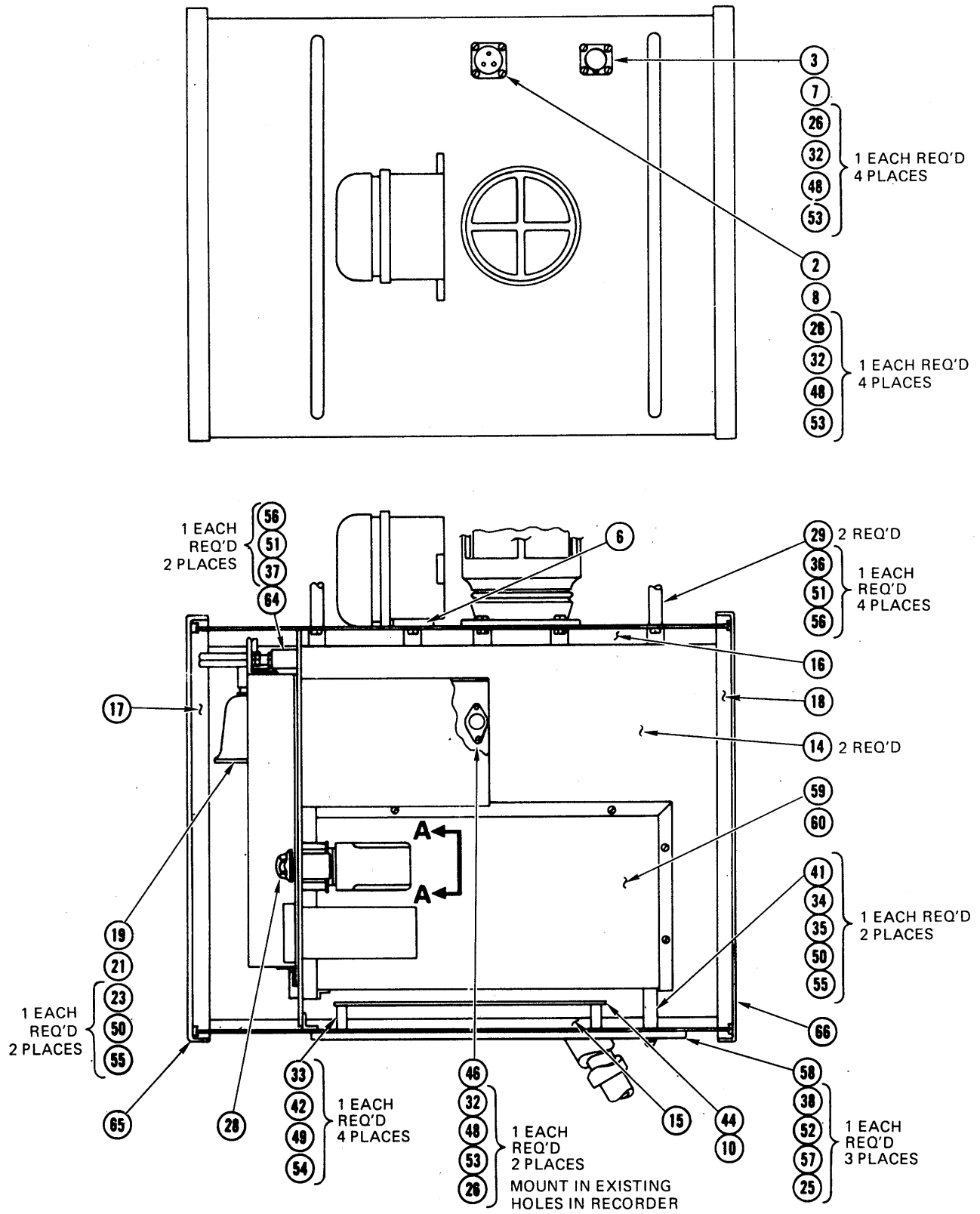


Figure 1. Batch Interface Detector Assembly (Sheet 2 of 2)

SECTION II

TM 5-6680-310-24P

(1) ILLUSTRATION		(2)	(3)	(4)	(5)	(6) DESCRIPTION	(7)	(8)
(a) FIG NO.	(b) ITEM NO.	SMR CODE	NATIONAL STOCK NUMBER	PART NUMBER	FSCM	UOC	U/M	QTY INC IN UNIT
						GROUP 01 - HOUSING ASSEMBLY		
1	1	PAOFZ	6350-01-044-4787	504W	34379	BELL	EA	1
1	2	PAOZZ	5935-00-933-4994	MS3120-F12-10P	96906	CONNECTOR	EA	1
1	3	PAOZZ	5935-00-162-1513	MS3100-F16-IOP	96906	CONNECTOR	EA	1
1	4	XBOZZ		1D-100-25-15	85919	DIAL, NON-LINEAR	EA	1
1	5	PAOFZ	5930-01-058-1059	2395-1	03972	FLASHER	EA	1
1	6	PAOZZ	5330-01-046-1229	T276-0016-Z	05991	GASKET	EA	1
1	7	PAOZZ	5330-01-046-5416	T276-0044-Z	05591	GASKET	EA	1
1	8	PAOZZ	5330-01-044-7514	T276-0045-Z	05991	GASKET	EA	1
1	9	PAOZZ	5325-00-276-4205	9650-G	77969	GROMMET	EA	1
1	10	PAOZZ	6680-01-044-7772	152-5006-80-200	11416	HEATER	EA	1
1	11	XBOZZ		1586A13	39428	HINGE	EA	1
1	14	PAOZZ	5640-01-043-8524	T276-0021-Z	05991	INSULATION	EA	2
1	15	PAOZZ		T276-0022-Z	05991	INSULATION	EA	1
1	16	PAOZZ	5640-01-043-8525	T276-0023-Z	05991	INSULATION	EA	1
1	17	PAOZZ	5640-01-043-8526	T276-0142-Z	05991	INSULATAON,FRONT DOOR	EA	1
1	18	PAOZZ	5640-01-043-3521	T276-0143-Z	05991	INSULATION,REAR DOOR	EA	1
1	19	PAOFZ	6210-01-057-6097	40-882	88750	HOLDER,LAMP	EA	1
1	20	PAOZZ		V-51 TYPE JB10G	33057	FIXTURE,LIGHT	EA	1
1	21	PAOZZ	6240-01-044-0073	40A15	08808	LIGHT, 40 WATT	EA	1
1	22	PAOZZ	6240-00-246-5052	100 A/RS	08808	LIGHT, 100 WATT	EA	1
1	23	PAOZZ	5310-00-934-9759	MS35649-84	96906	NUT,HEX	EA	6
1	24	PAOZZ	5310-00-199-6539	MS35649-104	96906	NUT,HEX	EA	3
1	25	PAOZZ	5310-00-655-6932	MS35690-430	96906	NUT,HEX	EA	3
1	26	PAOZZ	5310-00-934-9748	MS35649-44	96906	NUT,HEX	EA	14
1	27	PAOZZ	5310-00-934-9761	MS35649-64	96906	NUT,HEX	EA	8
1	28	PAOZZ	7460-01-048-0198	T276-1068-Z	05991	POTENTIOMETER, NON-LINEAR SCALE SETPOINT	EA	1
1	29	XBOZZ		T276-0013-Z	05991	RAIL	EA	2
1	30	PAOFD	6685-01-046-0321	4332-SP-474	33454	READOUT,TEMPERATURE	EA	1
1	31	PAOFH	6680-01-044-8857	MS401E-82-115-61-15	33454	RECORDER	EA	1
1	32	PAOZZ	5305-00-054-5647	MS51957-13	96906	SCREW, PAN HEAD	EA	14
1	33	PAOGZ	5305-00-054-6650	MS51957-26	96906	SCREW, PAN HEAD	EA	28
1	34	PAOZZ	5305-00-054-6668	MS51957-43	96906	SCREW, PAN HEAD	EA	4
1	35	PAOZZ	5305-00-054-6670	MS51957-45	96906	SCREW, PAN HEAD	EA	6
1	36	PAOZZ	5305-00-050-9225	MS51957-59	96906	SCREW, PAN HEAD	EA	4
1	37	PAOZZ	5365-01-044-2822	MS51958-61	96906	SCREW, PAN HEAD	EA	9
1	38	PAOZZ	5305-00-059-3676	MS51958-80	96906	SCREW, PAN HEAD	EA	3
1	39	XBFZZ		T276-0032-Z	05991	RELAY,SETPOINT	EA	1
1	40	PAOZZ	5935-01-045-4831	8EB	71785	SOCKET,OCTAL	EA	2
1	41	PAOZZ	5340-01-044-2821	T276-0007-Z	05591	SPACER	EA	4
1	42	PAOZZ	5365-01-044-2822	T276-0008-Z	05991	SPACER	EA	4
1	43	PAOZZ	5365-01-044-2823	T276-0009-Z	05991	SPACER	EA	4

SECTION II

TM5-6680-310-24P

(1) ILLUSTRATION		(2)	(3)	(4)	(5)	(6) DESCRIPTION	(7)	(8)
(a) FIG NO.	(b) ITEM NO.	SMR CODE	NATIONAL STOCK NUMBER	PART NUMBER	FSCM	UOC	U/M	QTY INC IN UNIT
1	44	PAOZZ	6680-01-044-7773	276-0010-Z	05991	SUPPORT,HEATER	EA	1
1	45	PAOZZ	5930-00-253-0426	MS25089-2C	96906	SWITCH,PUSHBUTTON	EA	1
1	46	PAOZZ	5930-01-043-7823	3001-24-69	14604	SWITCH,THERMAL	EA	1
1	47	PAOZZ	5930-00-655-4247	MS24524-22	96906	SWITCH,TOGGLE	EA	2
1	48	PAOZZ	5310-00-595-6211	MS51795-803	96906	WASHER,FLAT	EA	14
1	49	PAOZZ	5310-00-782-1349	MS51795-804	96906	WASHER,FLAT	EA	28
1	50	PAOZZ	5310-00-880-5978	MS51795-807	96906	WASHER,FLAT	EA	12
1	51	PAOZZ	5310-00-619-1148	MS51795-808	96906	WASHER,FLAT	EA	13
1	52	PAOZZ	5310-00-582-5677	MS51795-810	96906	WASHER,FLAT	EA	3
1	53	PAOZZ	5310-00-933-8118	MS35338-78	96906	WASHER,SPLIT LOCK	EA	14
1	54	PAOZZ	5310-00-092-6395	MS35338-79	96906	WASHER,SPLIT LOCK	EA	28
1	55	PAOZZ	5310-00-933-1819	MS35338-80	96906	WASHER,SPLIT LOCK	EA	12
1	56	PAOZZ	5310-00-933-8120	MS35338-81	96906	WASHER,SPLIT LOCK	EA	13
1	57	PAOZZ	5310-00-042-6758	MS35338-82	96906	WASHER,SPLIT LOCK	EA	3
1	58	PAOZZ	6680-01-045-0807	T276-0003-Z	05991	TRIPOD ASSEMBLY (SEE FIGURE 2)	EA	1
1	59	PAOZZ	5365-01-044-5375	T276-0004-Z	05991	CARD RACK CASE ASSEMBLY (SEE FIGURE 3)	EA	1
1	60	PAFFZ	6680-01-069-6847	T276-000S-Z	05991	CARD RACK ASSEMBLY (SEE FIGURE 4)	EA	1
1	61	PAOZZ		T276-1065-Z	05991	PLATE,IDENTIFICATION	EA	1
1	62	PAOZZ	6680-01-057-7730	T276-0006-Z	05991	MOUNTING,PANEL (SEE FIGURE 16)	EA	1
1	63	PAOZZ	6680-01-057-4184	T276-0012-Z	05991	RECORDER COVER ASSEMBLY (SEE FIGURE 17)	EA	1
1	64	PAOZZ	5340-01-046-4075	T276-0014-Z	05991	LATCH BRACKET ASSEMBLY (SEE FIGURE 18)	EA	1
1	65	PAOZZ	6680-01-057-8387	T276-0015-Z	05991	FRONT DOOR ASSEMBLY	EA	1
1	66	PAOZZ	6680-01-044-8750	T276-0017-Z	05991	REAR DOOR ASSEMBLY	EA	1
1	67	PAOZZ		T276-0002-Z	05991	CASE WELDMENT ASSEMBLY	EA	1
1	68	PAOZZ		T276-0154-Z	05991	BATCH INTERFACE DETECTOR SYSTEM ASSEMBLY (SEE FIGURE 19)	EA	1

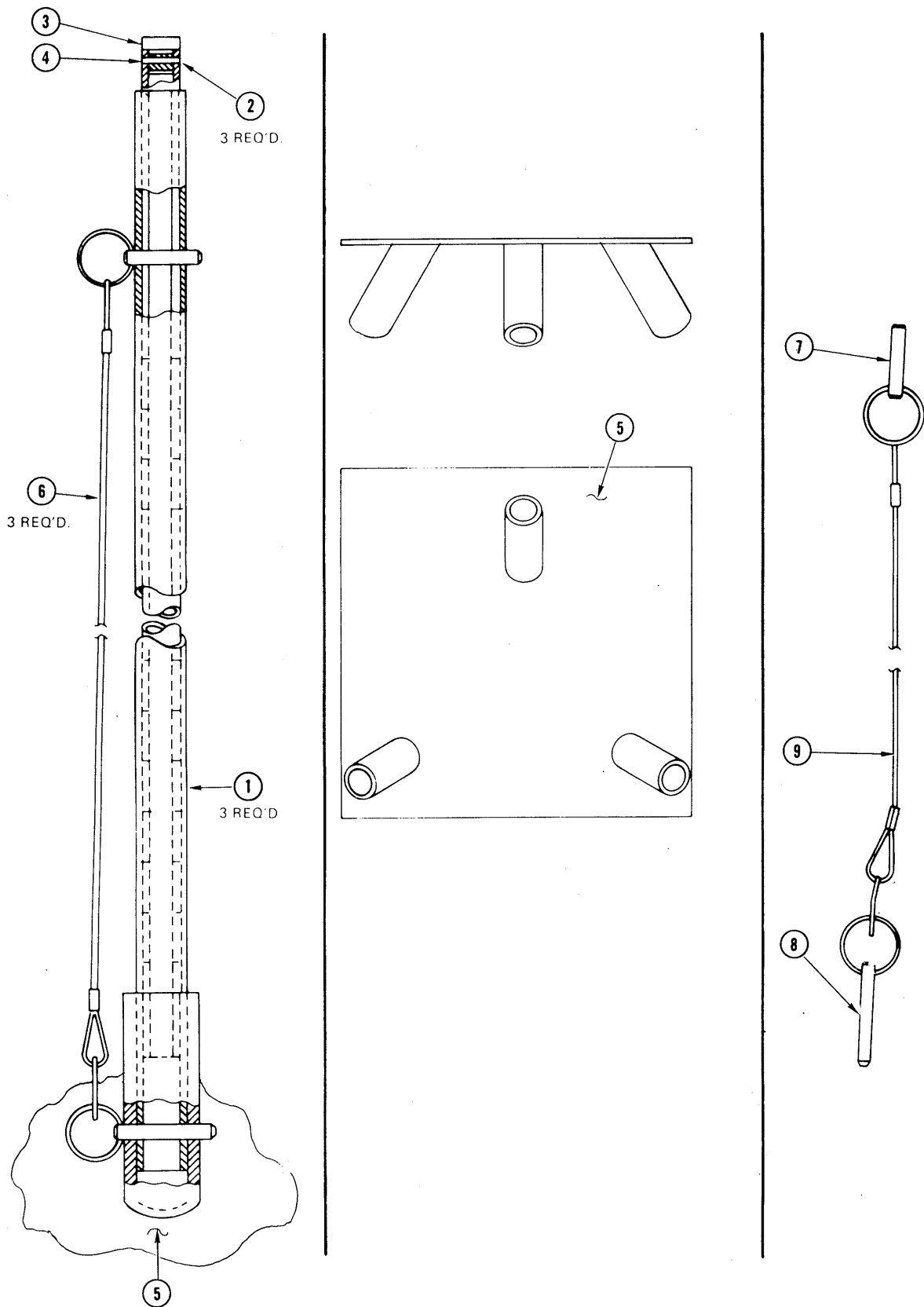


Figure 2. Tripod Assembly

SECTION II

TM 5-6680-310-24P

(1) ILLUSTRATION		(2)	(3)	(4)	(5)	(6)	(7)	(8)
(a) FIG NO.	(b) ITEM NO.	SMR CODE	NATIONAL STOCK NUMBER	PART NUMBER	FSCM	DESCRIPTION UOC	U/M	QTY INC IN UNIT
2		PAOZZ	6680-01-045-0807	T276-0003-Z	05991	TRIPOD ASSEMBLY	EA	1
2	1	XAOZZ		T276-0059-Z	05991	.LEG,UPPER	EA	3
2	2	XAOZZ		T276-0060-Z	05991	.LEG,LOWER	EA	3
2	3	XAOZZ		T276-0062-Z	05991	.PLUG,LOWER LEG	EA	3
2	4	PAOZZ		T276-0063-Z	05991	.PIN,SPRING	EA	3
2	5	XAOZZ		T276-0057-Z	05991	.BASE ASSEMBLY	EA	3
2	6	PAOZZ	6680-01-044-8859	T276-0061-Z	05991	.BALL LOCK ASSEMBLY	EA	3
2	7	PAOZZ	5640-01-043-8522	T276-0019-Z	05991	..PIN,BALL LOCK	EA	3
2	8	PAOZZ	6680-01-044-7774	T276-0120-Z	05991	..PIN,BALL LOCK	EA	3
2	9	PAOZZ	6680-01-047-0008	T276-0121-Z	05991	..LANYARD	EA	3

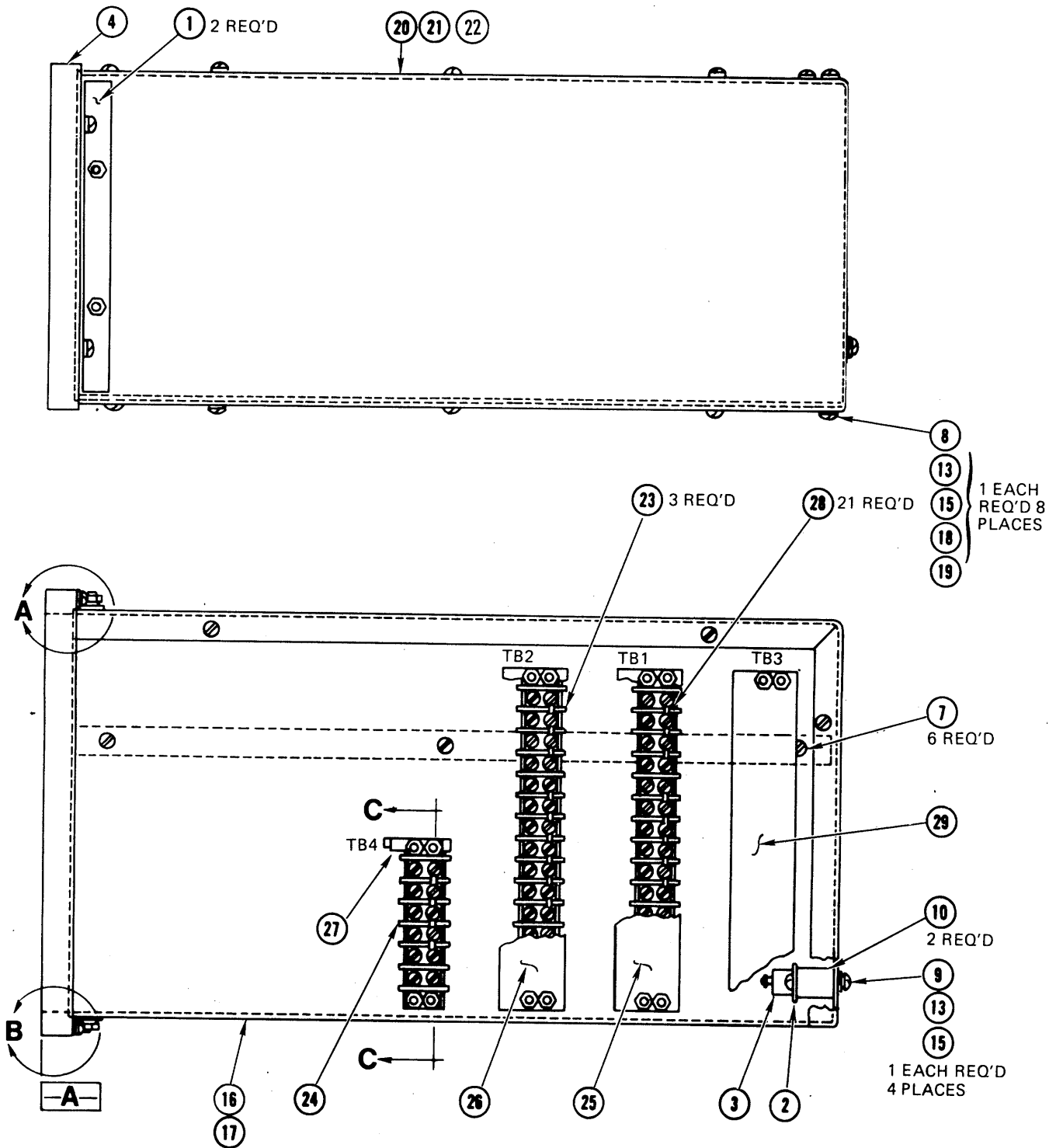


Figure 3. Card Rack Case Assembly (Sheet 1 of 2)

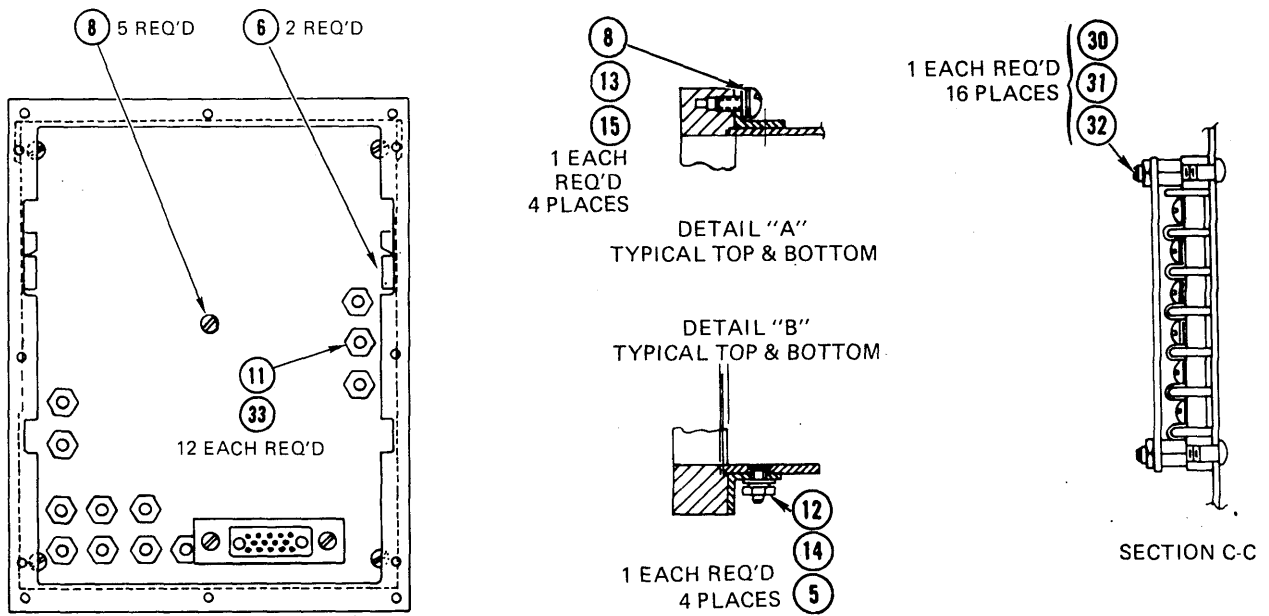


Figure 3. Card Rack Case Assembly (Sheet 2 of 2)

SECTION II

TM 5-6680-310-24P

(1) ILLUSTRATION		(2)	(3)	(4)	(5)	(6)	(7)	(8)
(a) FIG NO.	(b) ITEM NO.	SMR CODE	NATIONAL STOCK NUMBER	PART NUMBER	FSCM	DESCRIPTION UOC	U/M	QTY INC IN UNIT
3		PAOZZ	5365-01-044-5375	T276-0004-Z	05991	CARD RACK CASE ASSEMBLY	EA	1
3	1	XBOZZ		T276-0067-Z	05991	.ANGLE	EA	2
3	2	XBOZZ		T276-0068-Z	05991	.CONNECTOR	EA	1
3	3	PAOZZ	5935-00-839-3468	MRA-14S-G	81312	.CONNECTOR	EA	1
3	4	XBOZZ		T276-0066-Z	05991	.FRAME	EA	1
3	5	PAOZZ	5310-00-934-9748	MS35648-244	96906	.NUT,HEX	EA	4
3	6	XBOZZ		T276-0070-Z	05991	.RAIL,CARD GUIDE	EA	2
3	7	PAOZZ		MS15957-25	96906	.SCREW,PAN HEAD	EA	6
3	8	PAOZZ		MS15957-27	96906	.SCREW,PAN HEAD	EA	17
3	9	PAOZZ		MS15957-28	96906	.SCREW,PAN HEAD	EA	4
3	10	PAOZZ	5365-01-044-5375	T276-0069-Z	05991	.SPACER	EA	2
3	11	PAOZZ	5940-00-082-4897	FT01XA01	81349	.TERMINAL	EA	12
3	12	PAOZZ		MS15795-804	96906	.WASHER,FLAT	EA	4
3	13	PAOZZ	5310-00-059-6211	MS15795-803	96906	.WASHER,FLAT	EA	11
3	14	PAOZZ	5310-00-933-8118	MS35338-78	96906	.WASHER,SPLIT LOCK	EA	4
3	15	PAOZZ	5310-00-929-6395	MS35338-136	96906	.WASHER,SPLIT LOCK	EA	16
3	16	XBOZZ		T276-0064-Z	05991	.SIDE-BOTTOM ASSEMBLY	EA	1
3	17	XBOZZ		T276-0124-Z	05991	.SIDES BOTTOM	EA	1
3	18	PAOZZ	5307-01-047-1857	T276-0101-Z	05991	.STUD,CAPTIVE	EA	4
3	19	PAOZZ		NCN-6-2-2-4	70709	.NUT,CAPTIVE	EA	8
3	20	XBOZZ		T276-0065-Z	05991	.TOP-BACK ASSEMBLY	EA	1
3	21	XBOZZ		T276-0123-Z	05991	.TOP AND BACK	EA	1
3	22	PAOZZ	5310-01-044-2828	T276-0096-Z	05991	.STUD, CAPTIVE	EA	2
3	23	PAOZZ		0038-1059-T	05991	.STRIP,TERMINAL,14 TERMINAL	EA	3
3	24	PAOZZ		0038-1058-T	05991	.STRIP,TERMINAL,6 TERMINAL	EA	1
3	25	PAOZZ		T276-1081-Z	05991	.MARKER,TERMINAL STRIP,TB1	EA	1
3	26	PAOZZ		T276-1082-Z	05991	.MARKER,TERMINAL STRIP,TB2	EA	1
3	27	PAOZZ		T276-1080-Z	05991	.MARKER,TERMINAL STRIP,TB4	EA	1
3	28	PAOZZ		0103-1003-T	05991	.JUMPER	EA	21
3	29	PAOZZ		T276-1083-Z	05991	.MARKER,TERMINAL STRIP,TB3	EA	1
3	30	PAOZZ		0152-1034-T	05991	.STANDOFF,MALE-FEMALE	EA	16
3	31	PAOZZ		0119-0013-J	05991	.CREW,PAN HEAD	EA	16
3	32	PAOZZ		0500-1041-J	05991	.NUT,HEX	EA	16
3	33	PAOZZ		0500-0016-J	05991	.NUT,HEX	EA	12

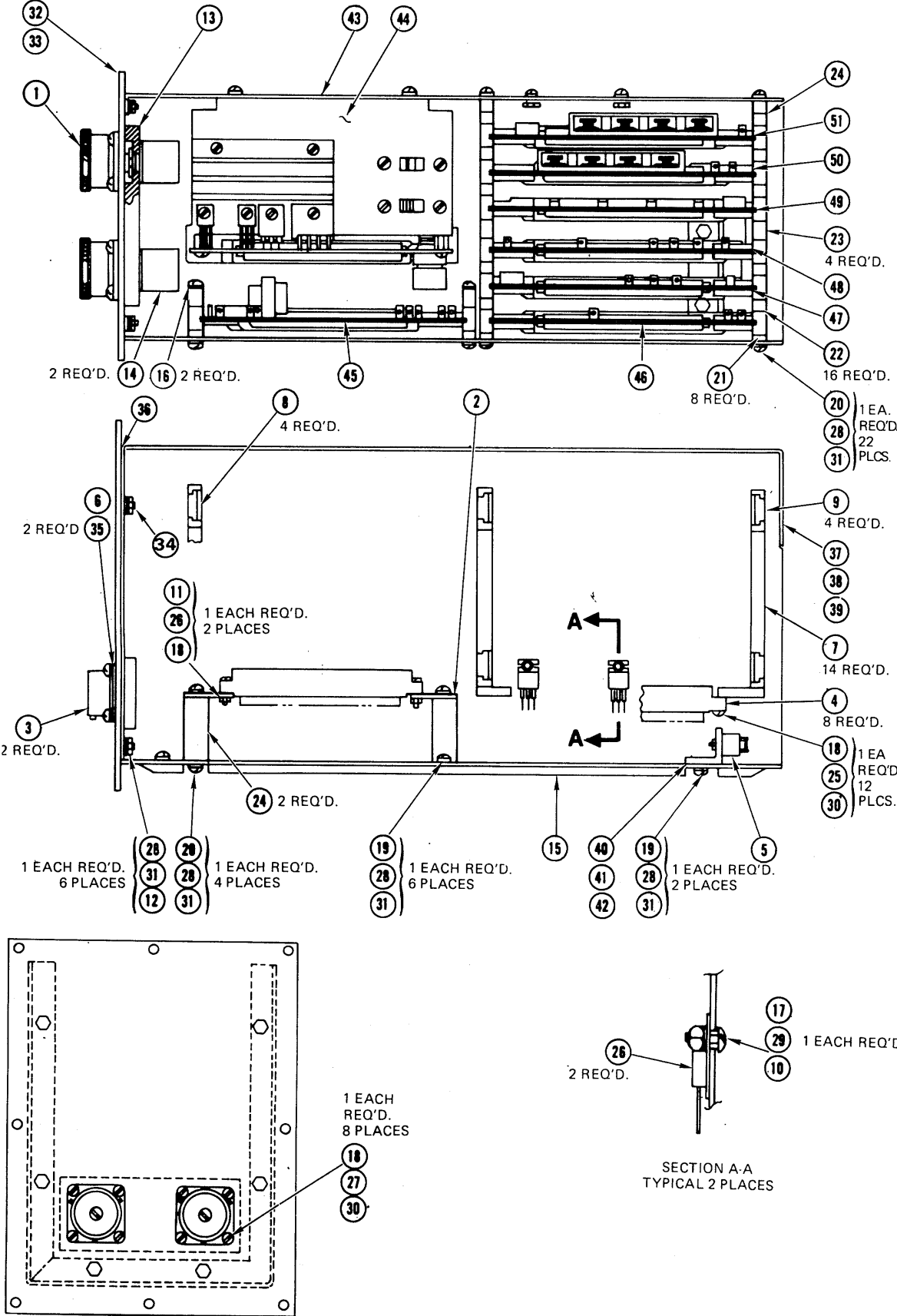


Figure 4. Card Rack Assembly
16

SECTION II

TM 5-6680-310-24P

(1) Illustration		(2)	(3)	(4)	(5)	(6) Description	(7)	(8)
(a) Fig No.	(b) Item No.	SMR Code	Federal Stock Number	Part Number	FSCM	Usable On Code	U/M	Qty Inc In Unit
						GROUP 02 - ELECTRICAL COMPONENTS		
4		PAFFZ	6680-01-069-6847	T276-0005-Z	05991	CARD RACK ASSEMBLY	EA	1
4	1	XBOZZ		T276-0083-Z	05991	.CAP,CONNECTOR.....	EA	2
4	2	XBOZZ		T276-0080-Z	05991	.CONNECTOR,FLOAT MOUNT.....	EA	1
4	3	XBOZZ		T276-0148-Z	05991	.CONNECTOR,DUMMY	EA	2
4	4	PAFZZ	5935-00-780-8667	8DB22-50	81312	.CONNECTOR	EA	8
4	5	PAFZZ	5935-00-839-3468	MRA14-P-G	81312	.CONNECTOR	EA	1
4	6	PAFZZ	5330-01-044-7514	T276-0045-Z	05991	.GASKET	EA	2
4	7	PAOZZ	5990-01-058-9909	T312-42-Y	18677	.GUIDE,CARD	EA	14
4	8	XBOZZ		T276-0086-Z	05991	.BAR,MOUNTING	EA	4
4	9	XBOZZ		T276-0087-Z	05991	.BAR,MOUNTING	EA	4
4	10	PAOZZ	5310-00-934-9748	MS35648-244	96906	.NUT,HEX.....	EA	4
4	11	PAOZZ	5310-01-050-6100	0500-0048-J	05991	.NUT,HEX.....	EA	2
4	12	PAOZZ	5310-00-934-9761	MS35649-64	96906	.NUT,HEX.....	EA	2
4	13	XBOZZ		T276-0075-Z	05991	.PLATE,POTENTIOMETER MOUNTING	EA	1
4	14	PAOZZ	5905-00-535-9891	0131-1061-T	05991	.POTENTIOMETER, 100K OHM	EA	2
4	15	XBOZZ		T276-0070-Z	05991	.RAIL,CARD RACK	EA	1
4	16	PAOZZ	6680-01-049-8815	T276-0081-Z	05991	.BAR,RETAINING	EA	2
4	17	PAOZZ	5305-00-054-5647	MS51957-13	96906	.SCREW,PAN HEAD	EA	2
4	18	PAOZZ	5305-00-054-5657	MS51957-17	96906	.SCREW,PAN HEAD	EA	22
4	19	PAOZZ	5305-00-054-6650	MS51957-26	96906	.SCREW,PAN HEAD	EA	8
4	20	PAOZZ	5305-00-054-6651	MS51957-27	96906	.SCREW,PAN HEAD	EA	26
4	21	PAOZZ	5365-01-051-9458	T276-0089-Z	05991	.SPACER,1/8".....	EA	8
4	22	PAOZZ	5365-01-044-2824	T276-0090-Z	05991	.SPACER,1/4".....	EA	16
4	23	PAOZZ	5365-01-051-9459	T276-0091-Z	05991	.SPACER,3/8".....	EA	8
4	24	PAOZZ		T276-0172-Z	05991	.SPACER,1/2".....	EA	4
4	25	PAOZZ	5365-01-051-7935	T276-0079-Z	05991	.SPACER,1/32".....	EA	2
4	26	PAFZZ	5961-01-844-3799	0124-1033-T	05991	.TRANSISTOR	EA	2
4	27	PAOZZ	5310-00-595-6211	MS15795-303	96906	.WASHER,FLAT.....	EA	22
4	28	PAOZZ	5310-00-082-1349	MS15795-804	96906	.WASHER,FLAT.....	EA	40
4	29	PAOZZ	6610-00-946-3632	2661	83330	.WASHER,SHOULDER	EA	2
4	30	PAOZZ	5310-00-933-8118	MS35338-78	96906	.WASHER,SPLIT LOCK	EA	20
4	31	PAOZZ	5310-00-092-6395	MS35338-79	96906	.WASHER,SPLIT LOCK	EA	40
4	32	XBFZZ		T276-0011-Z	05991	.CARD RACK PANEL ASSEMBLY	EA	1
4	33	XBOZZ		T276-0073-Z	05991	.PANEL.....	EA	1
4	34	PAOZZ	5307-01-047-1857	T276-0101-Z	05991	.STUD,CAPTIVE EA		6
4	35	PAOZZ	5330-01-050-6135	T276-0076-Z	05991	.GASKET	EA	1
4	36	PAFZZ	5330-01-044-2868	T276-0098-Z	05991	.STRIP,GASKET EA	EA	1
4	37	XBFZZ		T276-0074-Z	05991	.CARD RACK COVER ASSEMBLY.....	EA	1
4	38	XBOZZ		T276-0124-Z	05991	.COVER.....	EA	1
4	39	XBOZZ		T276-0125-Z	05991	.CUSHION	EA	1
4	40	XBOZZ		T276-0078-Z	05991	.MOUNTING BRACKET ASSEMBLY	EA	1
4	41	XBOZZ		T276-0077-Z	05991	.BRACKET.....	EA	1

SECTION II

TM 5-6680-310-24P

(1) Illustration		(2)	(3)	(4)	(5)	(6) Description	(7)	(8)
(a) Fig No.	(b) Item No.	SMR Code	Federal Stock Number	Part Number	FSCM	<i>Usable On Code</i>	U/M	Qty Inc In Unit
4	42	PAOZZ		NCN-G-2-2-4	70709	..NUT,CAPTIVE.....	EA	2
4	43	XBOZZ		T276-0072-Z	05991	..CASE,CARD RACK	EA	1
4	44	PAFFH	5305-01-044-7282	T276-0092-Z	05991	..POWER SUPPLY ASSEMBLY (SEE FIGURE 5)	EA	1
4	45	PAFHD	5940-01-050-5789	T276-0151-Z	05991	..CURRENT OUTPUT ASSEMBLY (SEE FIGURE 9)	EA	1
4	46	PAFHD	5950-01-048-0199	T276-1085-Z	05991	..OUTPUT DRIVER ASSEMBLY (SEE FIGURE 10).....	EA	1
4	47	PAFHD		T276-1086-Z	05991	..PHASE LOCK ASSEMBLY (SEE FIGURE 11)	EA	1
4	48	PAFHD	7460-01-054-2083	T276-1087-Z	05991	..LOOP INPUT FILTER ASSEMBLY	EA	1
4	49	PAFHD	7460-01-048-0197	T276-1088-Z	05991	..KT2 ASSEMBLY (SEE FIGURE 13)	EA	1
4	50	PAFHD	7460-01-048-0196	T276-1089-Z	05991	..SCALER ASSEMBLY (SEE FIGURE 14)	EA	1
4	51	PAFDL	7460-01-048-0195	T276-1090-Z	05991	..COUNTER,PRESET UP/DOWN (SEE FIGURE 15)	EA	1

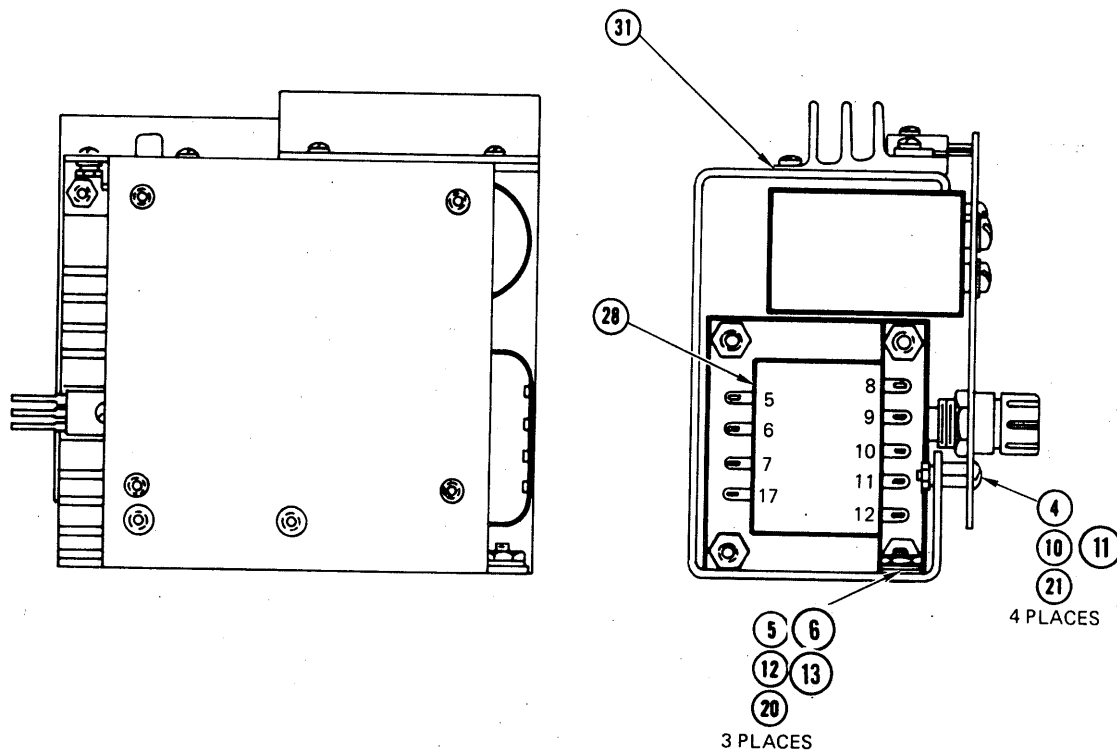
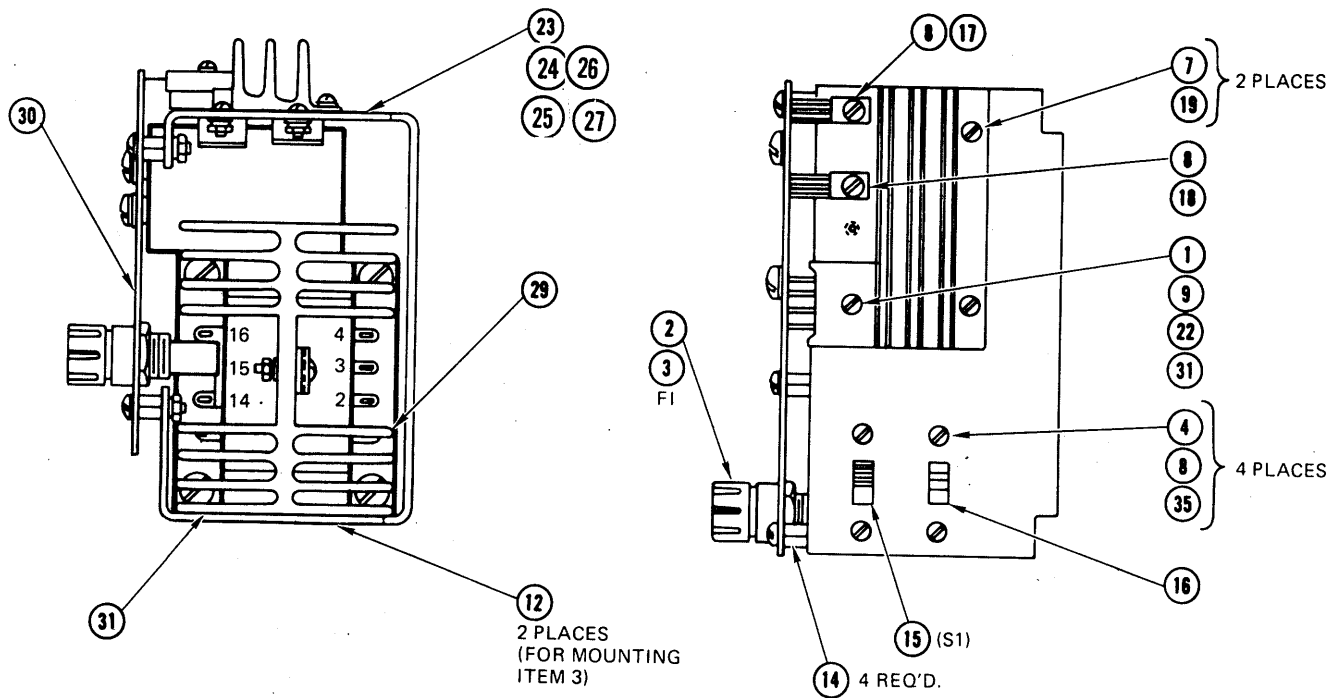


Figure 5. Power Supply Assembly
20

SECTION II

TM 5-6680-310-24P

(1) Illustration		(2)	(3)	(4)	(5)	(6) Description	(7)	(8)
(a) Fig No.	(b) Item No.	SMR Code	Federal Stock Number	Part Number	FSCM	Usable On Code	U/M	Qty Inc In Unit
5		PAFFH	5305-01-044-7282	0119-0009J	05991	POWER SUPPLY	EA	1
5	1	PAFZZ	5961-01-045-4630	0133-1023-T	05991	.DIODE	EA	1
5	2	PAOZZ	5920-00-280-9328	0111-1013-T	05991	.FUSE,1 AMP,3 AG	EA	1
5	3	PAOZZ	5920-00-556-0144	342004	75915	.HOLDER,FUSE	EA	1
5	4	PAOZZ	5310-01-044-5150	0500-0036-J	05991	.NUT,HEX	EA	4
5	5	PAOZZ	5310-01-044-2826	0500-0021-J	05991	.NUT,HEX	EA	4
5	6	PAOZZ	5310-01-044-2827	0500-0032-J	05991	.NUT,HEX	EA	3
5	7	PAOZZ	5305-01-012-7284	0119-0032-J	05991	.SCREW,PAN HEAD	EA	2
5	8	PAOZZ	5305-01-044-7292	0119-0009-J	05991	.SCREW,PAN HEAD	EA	4
5	9	PAOZZ	5305-01-050-9607	0119-0040-J	05991	.SCREW,PAN HEAD	EA	3
5	10	PAOZZ	5305-01-044-7293	0119-1028-J	05991	.SCREW,PAN HEAD	EA	1
5	11	PAOZZ	5305-01-050-9608	0119-1016-J	05991	.SCREW,PAN HEAD	EA	4
5	12	PAOZZ		MS24693-48	96906	.SCREW,FLAT HEAD	EA	2
5	13	PAOZZ		MS24693-270	96906	.SCREW,FLAT HEAD	EA	3
5	14	PAOZZ		0818-1015-C	05991	.STANDOFF	EA	4
5	15	PAFZZ	5930-00-964-4697	0068-2014-T	05991	.SWITCH,SPDT SLIDE	EA	1
5	16	PAFZZ		0068-1019-T	05991	.SWITCH,DPDT SLIDE	EA	1
5	17	PAFZZ	5961-01-044-2646	0134-1055-T	05991	.TRANSISTOR	EA	1
5	18	PAFZZ	5961-01-043-9549	0134-1053-T	05991	.TRANSISTOR	EA	1
5	19	PAFZZ	5310-00-782-1349	MS51795-804	96906	.WASHER,FLAT	EA	1
5	20	PAFZZ	5310-00-550-3715	MS35333-70	96906	.WASHER,LOCK	EA	6
5	21	PAFZZ	5310-00-616-3555	MS35333-71	96906	.WASHER,LOCK	EA	3
5	22	PAFZZ	5310-00-543-5933	MS35333-73	96906	.WASHER,LOCK	EA	3
5	23	XBFZZ		T276-0100-Z	05991	.MOUNTING BRACKET ASSEMBLY	EA	1
5	24	XBOZZ		0108-1014-H	05991	.BRACKET	EA	1
5	25	PAFZZ	5310-01-051-7942	0500-1049-J	05991	.NUT,FLUSH	EA	6
5	26	PAFZZ	5310-01-050-6106	0500-1050-J	05991	.NUT,FLUSH	EA	2
5	27	PAFZZ	5310-01-044-5222	T276-0150-Z	05991	.NUT,FLUSH	EA	4
5	28	PAFZZ	5950-01-043-7839	0655-1047-B	05991	.TRANSFORMER ASSEMBLY (SEE FIGURE 6)	EA	1
5	29	PAFHZ	5961-01-044-3800	0655-1044-B	05991	.HEATSINK ASSEMBLY (SEE FIGURE 7)	EA	1
5	30	PAFHD		0655-1043-B	05991	.POWER SUPPLY SUB-ASSEMBLY (SEE FIGURE 8) ..	EA	1
5	31	XBOZZ		0500-1004-D	05991	.COMPOUND,HEATSINK	LB	V

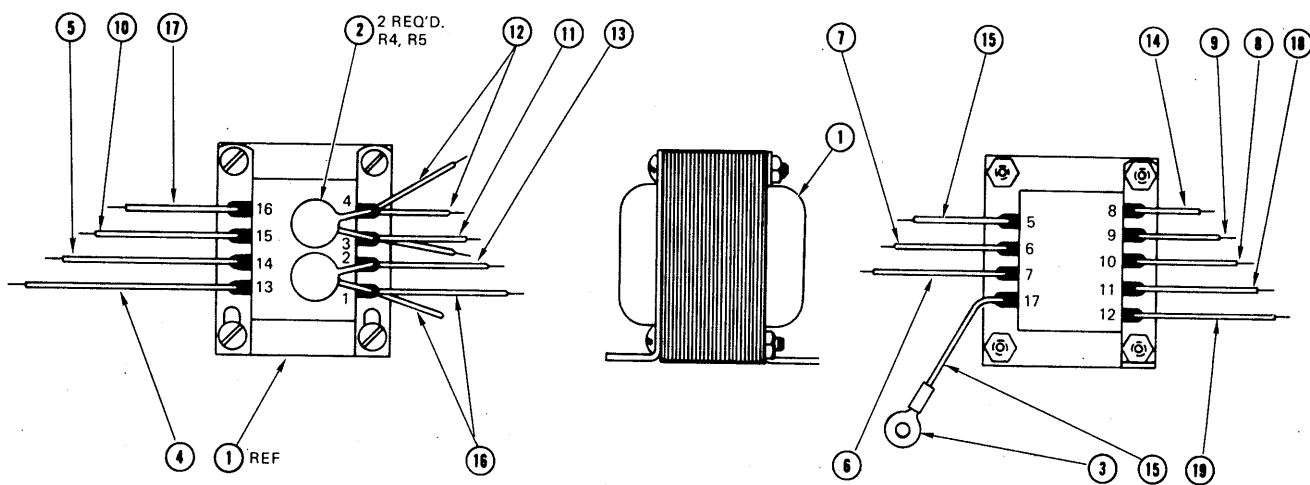


Figure 6. Transformer Assembly

SECTION II

TM 5-6680-310-24P

(1) Illustration		(2)	(3)	(4)	(5)	(6) Description	(7)	(8)
(a) Fig No.	(b) Item No.	SMR Code	Federal Stock Number	Part Number	FSCM	<i>Usable On Code</i>	U/M	Qty Inc In Unit
6		PAFZZ	5950-01-043-7839	0655-1047-B	05991	TRANSFORMER ASSEMBLY	EA	1
6	1	PAFZZ	6145-01-057-9242	0047-1033-T	05991	.TRANSFORMER.....	EA	1
6	2	XBOZZ		0115-1734-T	05991	.VARISTOR	EA	2
6	3	XBOZZ		0169-1002-T	05991	.LUG,RING	EA	1
6	4	PAFZZ	6145-01-057-9242	0012-1027-T	05991	.WIRE,22 AWG, WHT-ORN.....	FT	V
6	5	PAFZZ	6145-01-057-3696	0012-1024-T	05991	.WIRE,22 AWG,WHT-YEL	FT	V
6	6	PAFZZ	6145-01-057-5476	0012-1013-T	05991	.WIRE,22 AWG,VIOLET	FT	V
6	7	PAFZZ	6145-01-057-3691	0012-1015-T	05991	.WIRE,22 AWG,BLUE	FT	V
6	8	PAFZZ	6145-01-057-5477	0012-1021-T	05991	.WIRE,22 AWG,WHT-BLK	FT	V
6	9	PAFZZ	6145-01-057-2926	0012-1011-T	05991	.WIRE,22 AWG,WHITE.....	FT	V
6	10	PAFZZ	6145-01-057-5478	0012-1023-T	05991	.WIRE,22 AWG,WHT-GRN.....	FT	V
6	11	PAFZZ	6145-01-057-3692	0012-1016-T	05991	.WIRE,22 AWG,ORANGE	FT	V
6	12	PAFZZ	6145-01-057-2927	0012-1012-T	05991	.WIRE,22 AWG,YELLOW.....	FT	V
6	13	PAFZZ	6145-01-057-3693	0012-1017-T	05991	.WIRE,22 AWG,RED	FT	V
6	14	PAFZZ	6145-01-057-3694	0012-1019-T	05991	.WIRE,22 AWG,GREY.....	FT	V
6	15	PAFZZ	6145-01-057-3695	0012-1014-T	05991	.WIRE,22 AWG,GREEN.....	FT	V
6	16	PAFZZ	6145-01-057-5479	0012-1020-T	05991	.WIRE,22 AWG,BROWN.....	FT	V
6	17	PAFZZ	6145-01-057-9241	0012-1025-T	05991	.WIRE,22 AWG,WHT-BLU	FT	V
6	18	PAFZZ	6145-01-057-8053	0012-1061-T	05991	.WIRE,18 AWG,BLACK	FT	V
6	19	PAFZZ	6145-01-057-B054	0012-1063-T	05991	.WIRE,1B AWG,BROWN	FT	V

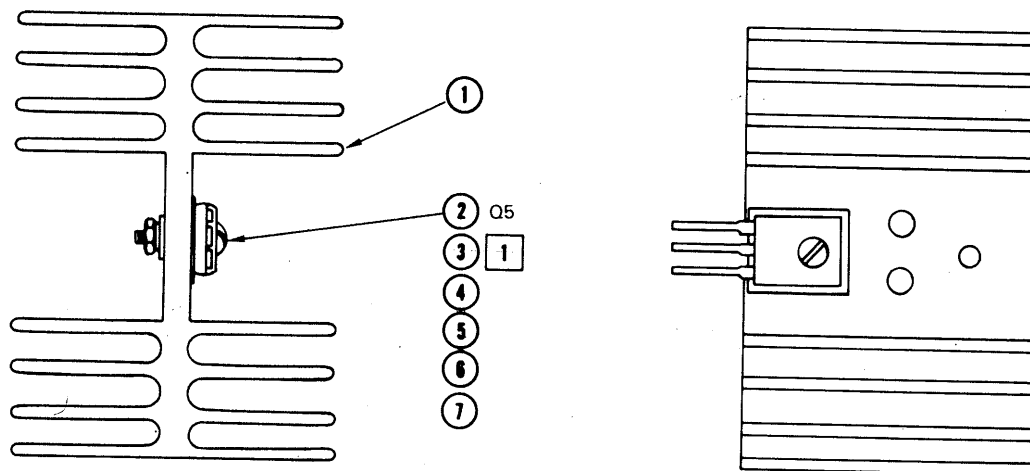


Figure 7. Heat Sink Assembly

SECTION II

TM 5-6680-310-24P

(1) Illustration		(2)	(3)	(4)	(5)	(6) Description	(7)	(8)
(a) Fig No.	(b) Item No.	SMR Code	Federal Stock Number	Part Number	FSCM	<i>Usable On Code</i>	U/M	Qty Inc In Unit
7		PAFHZ	5961-01-044-3800	0655-1044-B	05991	HEATSINK ASSEMBLY	EA	1
7	1	XAFZZ		0162-1012-T	05991	.HEATSINK.....	EA	1
7	2	PAFZZ	5961-01-043-9548	0134-1054-T	05991	.TRANSISTOR	EA	1
7	3	XBOZZ		0005-1004-U	05991	.COMPOUND,HEATSINK.....	LB	1
7	4	PAFZZ	5305-01-044-7293	0119-1028-J	05991	.SCREW,PAN HEAD	EA	1
7	5	PAFZZ	5310-00-782-1349	MS15798-804	96906	.WASHER,FLAT.....	EA	1
7	6	PAFZZ	5310-00-550-3715	MS35333-70	96906	.WASHER,LOCK.....	EA	1
7	7	PAFZZ	5310-00-044-5150	0500-0036-J	05991	.WIRE,22 AWG,WHT-VIO.....	PT	1

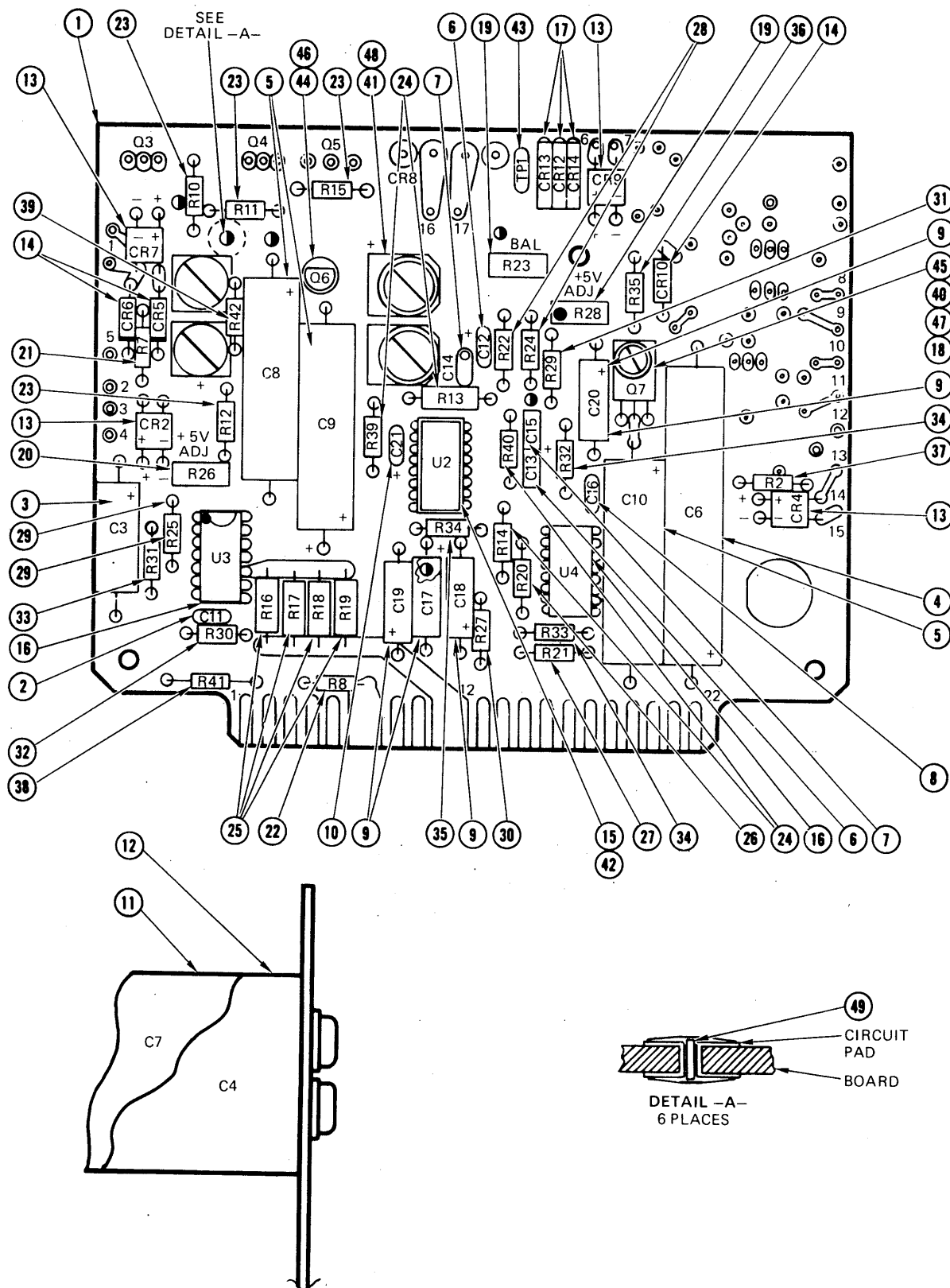


Figure 8. Power Supply Sub-Assembly

SECTION II

TM 5-6680-310-24P

(1) Illustration		(2)	(3)	(4)	(5)	(6) Description	(7)	(8)
(a) Fig No.	(b) Item No.	SMR Code	Federal Stock Number	Part Number	FSCM	Usable On Code	U/M	Qty Inc In Unit
8		PAFHD		0655-1043-B	05991	POWER SUPPLY SUB-ASSEMBLY-.....	EA	1
8	1	XAFZZ		0655-1011-C	05991	.BOARD,PRINTED WIRING.....	EA	1
8	2	XAFZZ		0114-1080-T	05991	.CAPACITOR,1000 pf, 100V,C11.....	EA	1
8	3	XAFZZ		0114-1159-T	05991	.CAPACITOR,15 uf, ± 10%,50V,C3.....	EA	1
8	4	XAFZZ		0114-1146-T	05991	.CAPACITOR,250 uf,30V,C6.....	EA	1
8	5	XAFZZ		0114-1140-T	05991	.CAPACITOR,200 uf,25V,C8,C9,C10.....	EA	3
8	6	XAFZZ		0114-1147-T	05991	.CAPACITOR,4.7 uf,35V,C12,C13.....	EA	2
8	7	XAFZZ		0114-1144-T	05991	.CAPACITOR, .01 uf,250V,C14,C15.....	EA	2
8	8	XAFZZ		0114-1128-T	05991	.CAPACITOR,150 pf,C16.....	EA	1
8	9	XAFZZ		0114-1085-T	05991	.CAPACITOR,10 uf ± 10%,20V,C17,C18,C19,C20.....	EA	4
8	10	XAFZZ		0114-1152-T	05991	.CAPACITOR,10 uf,TAG,C21.....	EA	1
8	11	XAFZZ		0114-1158-T	05991	.CAPACITOR,4000 uf,15V,C7.....	EA	1
8	12	XAFZZ		0114-1157-T	05991	.CAPACITOR,1400 uf,50V,C4.....	EA	1
8	13	XAFZZ		0133-1025-T	05991	.DIODE,MD4922.3,CR2,CR4,CR7,CR9.....	EA	4
8	14	XAFZZ		0133-1011-T	05991	.DIODE,IN4002,CR5,CRG,CR10.....	EA	3
8	15	XAFZZ		0176-1085-T	05991	.CIRCUIT,INTEGRATED,SG4501N,U2.....	EA	1
8	16	XAFZZ		0176-1013-1	05991	.CIRCUIT,INTEGRATED,MA723C,U3,U4.....	EA	2
8	17	XAFZZ		0200-1003-T	05991	.INDICATOR,LF.,CR12,CR13,CR14.....	EA	3
8	18	PAFZZ	5310-01-050-6101	0500-1044-J	05991	.NUT,HEX,4-40,UNC-2B.....	EA	2
8	19	XAFZZ		0131-1062-T	05991	.POTENTIOMETER 10K,± 20%,0.5W,R23,R28.....	EA	2
8	20	XAFZZ		0131-1063-T	05991	.POTENTIOMETER.,100,± 20%,0.5W,R26.....	EA	1
8	21	XAFZZ		0115-1334-T	05991	.RESISTOR,3.3K,± 5%, ¼ W, R7.....	EA	1
8	22	XAFZZ		0115-1441-T	05991	.RESISTOR,390 ± ¼ W R8.....	EA	1
8	23	XAFZZ		0115-1333-T	05991	.RESISTOR,100 ± 5%,1/4W,R10,R11,R12,R15.....	EA	4
8	24	XAFZZ		0115-1635-T	05991	.RESISTOR,2.7,± 5%,1/4W,R13,R14,R39,R40.....	EA	4
8	25	XAFZZ		0115-1684-T	05991	.RESISTOR,1 OHM,± 5%,1/2W,R16,R17,R18,R19.....	EA	4
8	26	XAFZZ		0115-1636-T	05991	.RESISTOR,8.2,± 5%,1/2W,R20.....	EA	1
8	27	XAFZZ		0115-1634-T	05991	.RESISTOR,3.9,± 5%,1/4W,R21.....	EA	1
8	28	XAFZZ		0115-1046-T	05991	.RESISTOR,40.2K,± 1%,1/8W,R22,R24.....	EA	2
8	29	XAFZZ		0115-1683-T	05991	.RESISTOR,750,± 5%,1/4W,R25.....	EA	1
8	30	XAFZZ		0115-1416-T	05991	.RESISTOR,17.8K,± 1%,-1/8W,R27.....	EA	1
8	31	XAFZZ		0115-1090-T	05991	.RESISTOR,26.1K,± 1%,1/BW,R29.....	EA	1
8	32	XAFZZ		0115-1172-T	05991	.RESISTOR,681,± 1%,1/8W,R30.....	EA	1
8	33	XAFZZ		0115-1118-T	05991	.RESISTOR,2.21K,± 1%,1/8W,R31.....	EA	1
8	34	XAFZZ		0115-1086-T	05991	.RESISTOR,7.15K,+ 1%,1/8W,R32,R33.....	EA	2
8	35	XAFZZ		0115-1632-T	05991	.RESISTOR,4.3K,± 5%,1/4W,R34.....	EA	1
8	36	XAFZZ		0115-1349-T	05991	.RESISTOR,2.2K,± 5%,1/4W,R35.....	EA	1
8	37	XAFZZ		0115-1447-T	05991	.RESISTOR,20K,+ 5%,1/4W,R2.....	EA	1
8	38	XAFZZ		0115-0004-1	05991	.RESISTOR,4.7K,± 5%,1/4W4,R41.....	EA	1
8	39	XAFZZ		0115-1413-T	05991	.RESISTOR,10K,± 5%,1/4W,R42.....	EA	1
8	40	PAFZZ	5305-01-050-9609	0119-0008-J	05991	.SCREW,PAN HEAD,4-40 UNC-2A X 3/8.....	EA	2
8	41	PAFZZ		0111-0061-J	05991	.SCREW,PAN HEAD,N0.10-3/8.....	EA	4
8	42	PAFZZ	5365-01-051-9458	0110-1002-T	05991	.SOCKET,I.C.....	EA	1

SECTION II

TM 5-6680-310-24P

(1) Illustration		(2)	(3)	(4)	(5)	(6) Description	(7)	(8)
(a) Fig No.	(b) Item No.	SMR Code	Federal Stock Number	Part Number	FSCM	<i>Usable On Code</i>	U/M	Qty Inc In Unit
8	43	XBFZZ	5310-00-595-6211	0148-1017-T	05991	.JACK,TEST,BLACK,TP1	EA	1
8	44	XAFZZ		0134-1056-T	05991	.TRANSISTOR, TI593,Q6	EA	1
8	45	XAFZZ		0134-1055-T	05991	.TRANSISTOR,MSE720,Q7	EA	1
8	46	XBFZZ		0018-1007-T	05991	.PAD,TRANSISTOR.....	EA	1
8	47	XBFZZ		MS51795-803	96906	.WASHER,FLAT,NO.4	EA	4
8	48	PAFZZ		MS35333-73	96906	.WASHER,INT. TOOTH,NO.10.....	EA	4
8	49	XBFZZ		0012-1008-T	05991	.NIRE,BUS,NO.22 AWG	FT	V

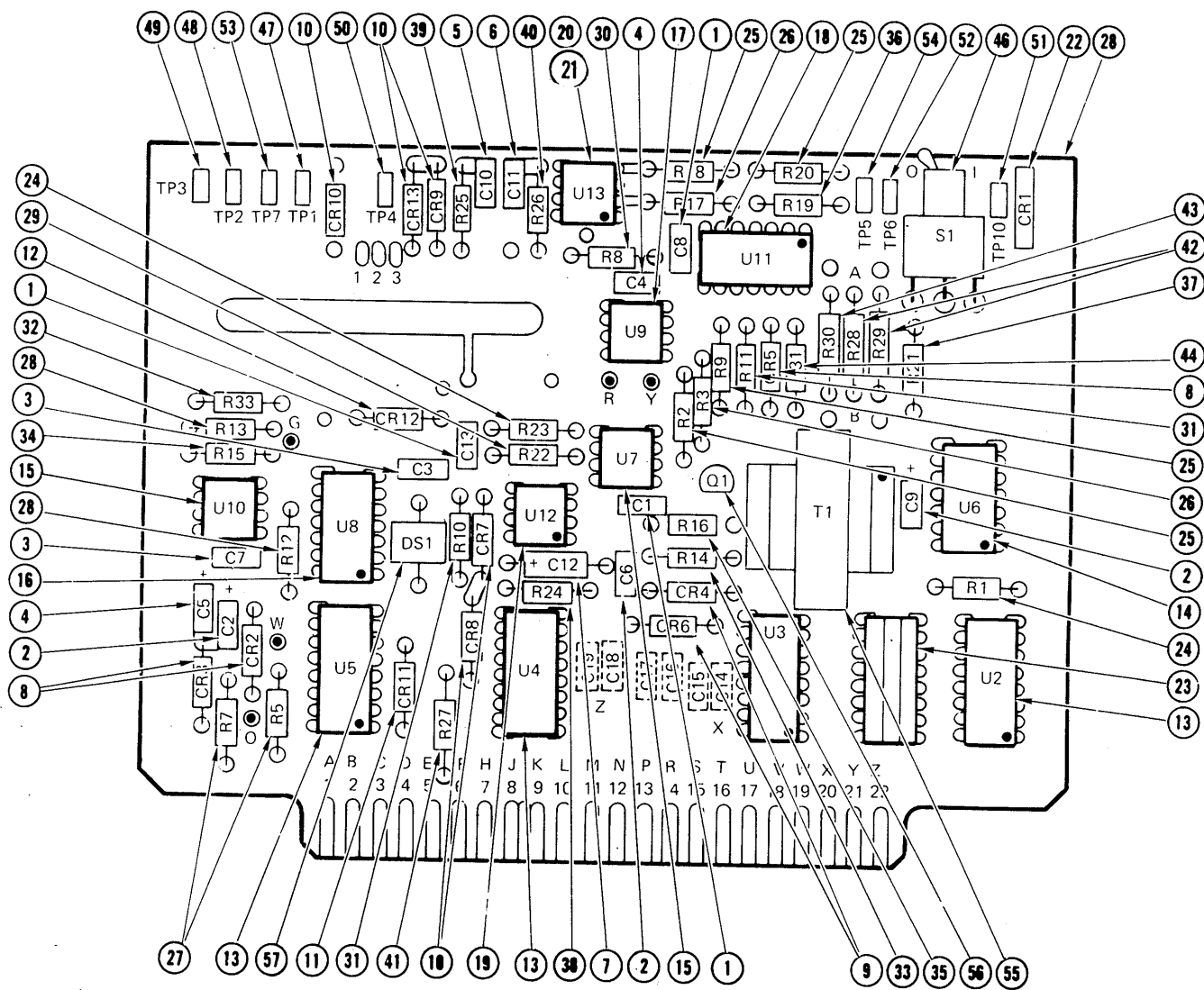


Figure 9. Current Output Assembly

SECTION II

TM 5-6680-310-24P

(1) Illustration		(2)	(3)	(4)	(5)	(6) Description	(7)	(8)
(a) Fig No.	(b) Item No.	SMR Code	Federal Stock Number	Part Number	FSCM	Usable On Code	U/M	Qty Inc In Unit
9		PAFHD	5940-01-050-5789	T276-0151-Z	05991	CURRENT OUTPUT ASSEMBLY	EA	1
9	1	XAFZZ		0114-1080-T	05991	.CAPACITOR, 1000 pf, 100V, C1, C8, C13	EA	3
9	2	XAFZZ		0114-1152-T	05991	.CAPACITOR, 10 uf, 25V, C2, C6, C9	EA	3
9	3	XAFZZ		0114-1151-T	05991	.CAPACITOR, 33 pf, 300V, C3, C7	EA	2
9	4	XAFZZ		0114-1153-T	05991	.CAPACITOR, 1.0 uf, 35V, C4, C5	EA	2
9	5	XAFZZ		0114-1077-T	05991	.CAPACITOR, .022 uf, 50V, C10	EA	1
9	6	XAFZZ		0114-1154-T	05991	.CAPACITOR, .047 uf, 50V, C11	EA	1
9	7	XAFZZ		0114-1130-T	05991	.CAPACITOR, 4.7 uf, 50V, C12	EA	1
9	8	XAFZZ		0197-1027-T	05991	.DIODE, IN823A, CR2, CR3, CR5	EA	3
9	9	XAFZZ		4000-1555-B	05991	.DIODE, MATCHED PAIR, CR4, CR6	EA	2
9	10	XAFZZ		0133-1013-T	05991	.DIODE, IN914, CR7, CR8, CR9, CR10, CR13	EA	5
9	11	XAFZZ		0133-1022-T	05991	.DIODE, IN4001, CR11	EA	1
9	12	XAFZZ		0133-1028-T	05991	.DIODE, IN732A, CR12	EA	1
9	13	XAFZZ		0176-1072-T	05991	.CIRCUIT, INTEGRATED, MC14527CP, U2, U3, U4, U5	EA	4
9	14	XAFZZ		0176-1077-T	05991	.CIRCUIT, INTEGRATED, MM74C73N, U6	EA	1
9	15	XAFZZ		0176-1057-T	05991	.CIRCUIT, INTEGRATED, LM308AN, U7, U10	EA	2
9	16	XAFZZ		0176-1076-T	05991	.CIRCUIT, INTEGRATED, .74C00N, US	EA	1
9	17	XAFZZ		0176-1009-T	05991	.CIRCUIT, INTEGRATED, uA741C, MINI DIP, U9	EA	1
9	18	XAFZZ		0176-1013-T	05991	.CIRCUIT, INTEGRATED, 723C, U11	EA	1
9	19	XAFZZ		0176-1074-T	05991	.CIRCUIT, INTEGRATED, 555, U12	EA	1
9	20	XAFZZ		0176-1090-T	05991	.CIRCUIT, INTEGRATED, LM725CN, MINI DIP, U13	EA	1
9	21	XAFZZ		0110-1003-T	05991	.SOCKET, I.C.	EA	1
9	22	XAFZZ		0200-1003-T	05991	.DIODE, LIGHT EMITTING, 547-2003, CR1	EA	1
9	23	XAFZZ		0653-1048-C	05991	.BOARD, PRINTED WIRING	EA	1
9	24	XAFZZ		0115-1344-T	05991	.RESISTOR, 100K, ± 5%, 1/4W, R1, R23	EA	2
9	25	XAFZZ		0115-1340-T	05991	.RESISTOR, 10K, ± 1%, 1/8W, R2, R9, R18, R20	EA	4
9	26	XAFZZ		0115-1301-T	05991	.RESISTOR, 4.22K, ± 1%, 1/8W, R3	EA	1
9	27	XAFZZ		0115-1665-T	05991	.RESISTOR, 1K, ± 1%, 1/SW, RS, R7	EA	2
9	28	XAFZZ		0115-1663-T	05991	.RESISTOR, 100K, ± 1%, 1/BW, R12, R13	EA	2
9	29	XAFZZ		0115-1003-T	05991	.RESISTOR, 1K, ± 5%, 1/4W, R22	EA	1
9	30	XAFZZ		0115-1666-T	05991	.RESISTOR, 21.5K, ± 1%, 1/8W, R8	EA	1
9	31	XAFZZ		0115-1388-T	05991	.RESISTOR, 39K, ± 5%, 1/4W, R10	EA	1
9	32	XAFZZ		0115-1671-T	05991	.RESISTOR, 20K, ± 1%, 1/8W, R11, R33	EA	2
9	33	XAFZZ		0115-1667-T	05991	.RESISTOR, 3.09K, ± 1%, 1/8W, R14	EA	1
9	34	XAFZZ		0115-1114-T	05991	.RESISTOR, 9.09K, ± 1%, 1/8W, R15	EA	1
9	35	XAFZZ		0115-1228-T	05991	.RESISTOR, 1.5K, ± 5%, 1/4W, R16	EA	1
9	36	XAFZZ		0115-1024-T	05991	.RESISTOR, 30.1K, ± 1%, 1/8W, R17, R19	EA	2
9	37	XAFZZ		0115-1672-T	05991	.RESISTOR, 2K, ± 1%, 1/BW, R21	EA	1
9	38	XAFZZ		0115-1333-T	05991	.RESISTOR, 100, ± 5%, 1/4W, R24	EA	1
9	39	XAFZZ		0115-1674-T	05991	.RESISTOR, 43, ± 5%, 1/4W, R25	EA	1
9	40	XAFZZ		0115-1675-T	05991	.RESISTOR, 11, ± 5%, 1/4W, R26	EA	1
9	41	XAFZZ		0115-1413-T	05991	.RESISTOR, 10K, ± 5%, 1/4W, R27	EA	1
9	42	XAFZZ		0115-1676-T	05991	.RESISTOR, 200, ± 1%, 1/4W, R28, R29	EA	2

SECTION II

TM 5-6680-310-24P

(1) Illustration		(2)	(3)	(4)	(5)	(6) Description	(7)	(8) Qty Inc In Unit
(a) Fig No.	(b) Item No.	SMR Code	Federal Stock Number	Part Number	FSCM	Usable On Code	U/M	
9	43	XAFZZ		0115-1669-T	05991	.RESISTOR,133,± 1%,1/4W,R30	EA	1
9	44	XAFZZ		0115-1680-T	05991	.RESISTOR,10,± 1%,1/4N,R31.....	EA	1
9		PAFZZ		0121-1001-T	05991	.SLEEVING,TEFLON,20 AWG	FT	A/R
9	46	PAFZZ	5930-01-074-3065	206-4	11237	.SWITCH,7101A.....	EA	1
9	47	XBOZZ		0148-1011-T	05991	.JACK,TEST,TP1 (BRN)	EA	1
9	48	XBOZZ		0148-1012-T	05991	.JACK,TEST,TP2 (RED)	EA	1
9	49	XBOZZ		0148-1013-T	05991	.JACK,TEST,TP3 (ORN).....	EA	1
9	50	XBOZZ		0148-1019-T	05991	.JACK,TEST,TP4 (YEL)	EA	1
9	51	XBOZZ		0148-1017-T	05991	.JACK,TEST,TP0 (BLK)	EA	1
9	52	XBOZZ		0148-1020-T	05991	.JACK,TEST,TP6 (BLU)	EA	1
9	53	XBOZZ		0148-1021-T	05991	.JACK,TEST,TP7 (VIO)	EA	1
9	54	XBOZZ		0148-1018-T	05991	.JACK,TEST,TP5 (GRN).....	EA	1
9	55	XAFZZ		0047-2005-T	05991	.TRANSFORMER,T1	EA	1
9	56	XAFZZ		0134-1060-T	05991	.TRANSISTOR,2N3416,Q1,.....	EA	1
9	57	XAFZZ		0204-1001-T	05991	.PROTECTOR,VOLTAGE,DS1	EA	1
9		PAFZZ	5310-00-782-1349	MS51795-804	96906	.WASHER,FLAT,NO.4	EA	2
9	BULK	PAFZZ	6145-01-057-8055	0012-1046-T	05991	.WIRE,BUS 20 AWG, GREEN	FT	A/R
9	BULK	PAFZZ	6145-01-057-3693	0012-1017-T	05991	.WIRE,22- AWG,RED	FT	A/R
9	BULK	XBFZZ		0012-1012-T	05991	.WIRE,22 AWG,YELLOW.....	FT	A/R
9	BULK	XBFZZ		0012-1011-T	05991	.WIRE,22 AWG,WHITE.....	FT	A/R
9	BULK	XBFZZ		0012-1016-T	05991	.WIRE,22 AWG,ORANGE	FT	A/R
9	BULK	XBFZZ		0012-1014-T	05991	.WIRE,22 AWG, GREEN.....	FT	A/R

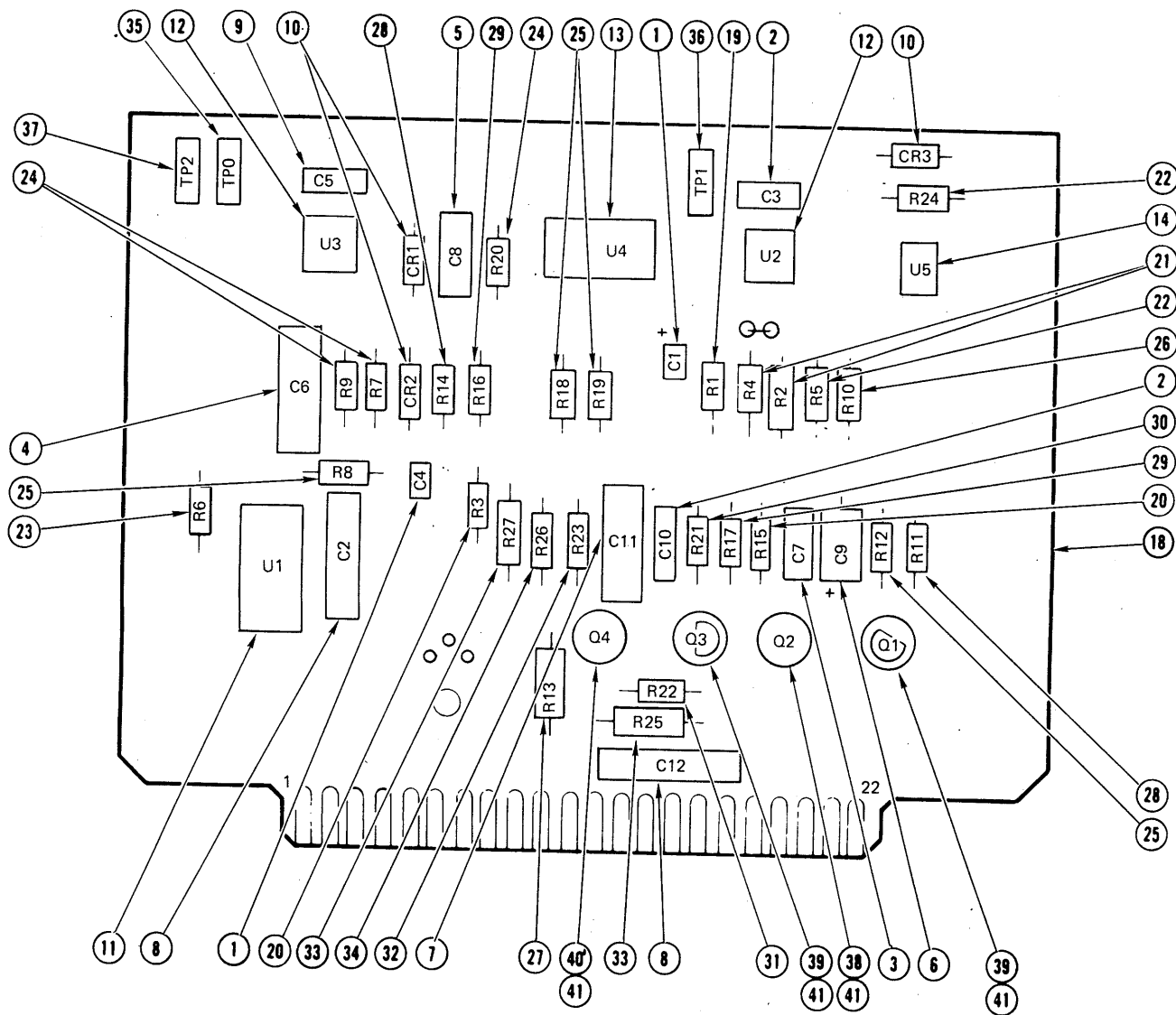


Figure 10. Output Driver Assembly

SECTION II

TM 5-6680-310-24P

(1) Illustration		(2)	(3)	(4)	(5)	(6) Description	(7)	(8) Qty Inc In Unit
(a) Fig No.	(b) Item No.	SMR Code	Federal Stock Number	Part Number	FSCM	Usable On Code	U/M	
10		PAFHD	5950-01-048-0199	T276-1085-Z	05991	OUTPUT DRIVER ASSEMBLY	EA	1
10	1	XAFZZ		0114-1153-T	05991	.CAPACITOR, 1.0 uf,35V,C1,C4.....	EA	2
10	2	XAFZZ		0114-1059-T	05991	.CAPACITOR, 33 pf, ± 5%,300V,C3,C10	EA	2
10	3	XAFZZ		0114-1177-T	05991	.CAPACITOR, 1000 pf, ± 5%,100V,C7	EA	1
10	4	XAFZZ		0114-1062-T	05991	.CAPACITOR, 1.0 uf,100V,C6	EA	1
10	5	XAFZZ		0114-1144-T	05991	.CAPACITOR, .01 uf, ± 10%,250V,C8	EA	1
10	6	XAFZZ		0114-1181-T	05991	.CAPACITOR, 4.7 uf,63V,C9	EA	1
10	7	XAFZZ		0114-1175-T	05991	.CAPACITOR, .22 uf, ± 10%,250V,C11	EA	1
10	8	XAFZZ		0114-1176-T	05991	.CAPACITOR, .uf, ± 10%,250V,C2,C12	EA	2
10	9	XAFZZ		0114-1061-T	05991	.CAPACITOR, 150 pf, ± 5%,500V,C5	EA	1
10	10	XAFZZ		0133-1013-T	05991	.DIODE,IN914,CR1,CR2,CR3.....	EA	3
10	11	XAFZZ		0176-1068-T	05991	.CIRCUIT,INTEGRATED,CD4046AE,U1	EA	1
10	12	XAFZZ		0176-1012-T	05991	.CIRCUIT,INTEGRATED,LM301AN,U2,U3.....	EA	2
10	13	XAFZZ		0176-1067-T	05991	.CIRCUIT,INTEGRATED,8038CC,U4	EA	1
10	14	XAFZZ		0176-1084-T	05991	.CIRCUIT,INTEGRATED,4N2B,U5	EA	1
10	18	XAFZZ		0653-1035-T	05991	.BOARD,PRINTED CIRCUIT	EA	1
10	19	XAFZZ		0115-1388-T	05991	.RESISTOR,39K,± 5%,1/4W,R1	EA	1
10	20	XAFZZ		0115-1003-T	05991	.RESISTOR, 1K,± 5%,1/4W,R3,R15	EA	2
10	21	XAFZZ		0115-1716-T	05991	.RESISTOR, 820K,± 5%,1/4W,R2,R4	EA	2
10	22	XAFZZ		0115-1349-T	05991	.RESISTOR, 2.2K,± 5%,1/4W,R5,R24	EA	2
10	23	XAFZZ		0115-1008-T	05991	.RESISTOR, 1M,± 5%,1/4W,R6	EA	1
10	24	XAFZZ		0115-1522-T	05991	.RESISTOR, 100K,± 5%,1/4W,R7,R9,R20.....	EA	3
10	25	XAFZZ		0115-1413-T	05991	.RESISTOR, 10K,± 5%,1/4W,R8,R12,R18,R19	EA	4
10	26	XAFZZ		0115-1550-T	05991	.RESISTOR,27K,± 5%,1/4W,R10	EA	1
10	27	XAFZZ		0115-0020-T	05991	.RESISTOR, 12K,± 5%,1/4W,R13	EA	1
10	28	XAFZZ		0115-1384-T	05991	.RESISTOR, 4.7K,± 5%,1/4W,R11,R14	EA	2
10	29	XAFZZ		0115-1523-T	05991	.RESISTOR, 2.7K,± 5%,1/4W,R16,R17	EA	2
10	30	XAFZZ		0115-1613-T	05991	.RESISTOR, 56K,± 5%,1/4W,R21	EA	1
10	31	XAFZZ		0115-1333-T	05991	.RESISTOR, 100 OHM,± 5%,1/4W,R22	EA	1
10	32	XAFZZ		0115-1222-T	05991	.RESISTOR, 560K,± 5%,1/4W,R23	EA	1
10	33	XAFZZ		0115-1389-T	05991	.RESISTOR, 1 OHM,± 5%,1/2W,R25,R27	EA	2
10	34	XAFZZ		0115-1383-T	05991	.RESISTOR, 5.6K,± 5%,1/4W,R26	EA	1
10	35	XBFZZ		0148-1010-T	05991	.JACK,TEST,TP0	EA	1
10	36	XBFZZ		0148-1003-T	05991	.JACK,TEST,TP1	EA	1
10	37	XBFZZ		0148-1004-T	05991	.JACK,TEST,TP2	EA	1
10	38	XAFZZ		0134-1029-T	05991	.TRANSISTOR,2N4356,Q2.....	EA	1
10	39	XAFZZ		0134-0011-T	05991	.TRANSISTOR,2N3568,Q1,Q3.....	EA	2
10	40	XAFZZ		0134-1034-T	05991	.TRANSISTOR,2N5142,Q4.....	EA	1
10	41	XAFZZ		0018-1010-T	05991	.PAD,TRANSISTOR.....	EA	4

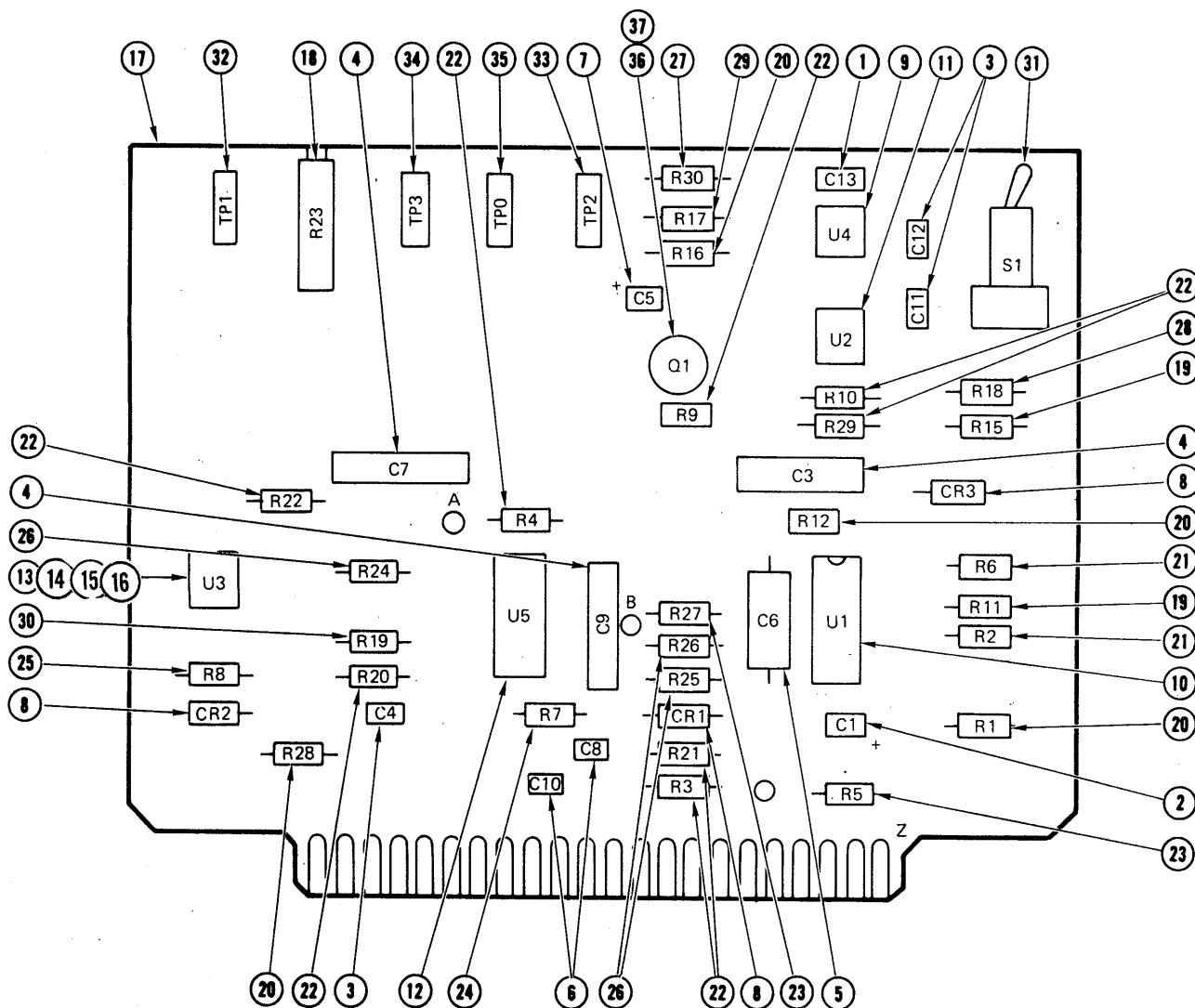


Figure 11. Phase Lock Loop Assembly
36

SECTION II

TM 5-6680-310-24P

(1) ILLUSTRATION		(2)	(3)	(4)	(5)	(6)	(7)	(8)
(a) FIG NO.	(b) ITEM NO.	SMR CODE	NATIONAL STOCK NUMBER	PART NUMBER	FSCM	DESCRIPTION USABLE ON CODE	U/M	QTY INC IN UNIT
11		PAFHD		T276-1086-Z	05991	PHASE LOCK LOOP ASSEMBLY	EA	1
11	1	XAFZZ		0114-1061-T	05991	.CAPACITOR, 150 pf, ± 5%, 500v, C13	EA	1
11	2	XAFZZ		0114-1153-T	05991	.CAPACITOR, 1.0 uf, 35V, C1	EA	1
11	3	XAFZZ		0114-1178-T	05991	.CAPACITOR, 4.7 uf, 35V, C4, C11, C12	EA	3
11	4	XAFZZ		0114-1176-T	05991	.CAPACITOR, .1 uf, ± 10%, 250V, C3, C7, C9	EA	3
11	5	XAFZZ		0114-1199-T	05991	.CAPACITOR, .01 uf, ± 25%, 33V, C6	EA	1
11	6	XAFZZ		0114-1177-T	05991	.CAPACITOR, 1000 pf, ± 5%, 100V, C8, C10	EA	2
11	7	XAFZZ		0114-1152-T	05991	.CAPACITOR, 10 uf, 20V, C5	EA	1
11	8	XAFZZ		0133-1013-T	05991	.DIODE, IN914, CR1, CR2, CR3	EA	3
11	9	XAFZZ		0176-1057-T	05991	.CIRCUIT, INTEGRATED, LM308AN, U4	EA	1
11	10	XAFZZ		0176-1068-T	05991	.CIRCUIT, INTEGRATED, CD4046AE, U1	EA	1
11	11	XAFZZ		0176-1110-T	05991	.CIRCUIT, INTEGRATED, MC1455P, U2	EA	1
11	12	XAFZZ		0176-1108-T	05991	.CIRCUIT, INTEGRATED, MC3302P, U5	EA	1
11	13	XAFZZ		0176-1012-T	05991	.CIRCUIT, INTEGRATED, LM301AN, U3	EA	1
11	14	XBFZZ		0110-1003-T	05991	.SOCKET, I.C.	EA	1
11	15	XBFZZ		0110-1002-T	05991	.SOCKET, I.C.	EA	1
11	16	XBFZZ		0110-1024-T	05991	.SOCKET, I.C.	EA	3
11	17	XAFZZ		0653-1034-T	05991	.BOARD, PRINTED CIRCUIT	EA	1
11	18	XAFZZ		0131-1074-T	05991	.POTENTIOMETER, 5K, R23	EA	1
11	19	XAFZZ		0115-0286-T	05991	.RESISTOR, 150K, ± 1%, 1/8W, R11, R15	EA	2
11	20	XAFZZ		0115-1003-T	05991	.RESISTOR, 1K, ± 5%, 1/4W, R1, R12, R16, R28	EA	4
11	21	XAFZZ		0115-1384-T	05991	.RESISTOR, 4.7K, ± 5%, 1/4W, R2, R6	EA	2
11	22	XAFZZ		0115-1413-T	05991	.RESISTOR, 10K, ± 5%, 1/4W, R3, R4, R9, R10, R20, R21, R22, R29	EA	8
11	23	XAFZZ		0115-1334-T	05991	.RESISTOR, 3.3K, ± 5%, 1/4W, R5, R27	EA	2
11	24	XAFZZ		0115-1615-T	05991	.RESISTOR, 270K, ± 5%, 1/4W, R7	EA	1
11	25	XAFZZ		0115-1346-T	05991	.RESISTOR, 10W, ± 5%, 1/4W, R8	EA	1
11	26	XAFZZ		0115-1522-T	05991	.RESISTOR, 100K, ± 5%, 1/4W, R24, R25, R26	EA	3
11	27	XAFZZ		0115-2019-T	05991	.RESISTOR, 2.7M, ± 5%, 1/4W, R30	EA	1
11	28	XAFZZ		0115-1277-1	05991	.RESISTOR, 182K, ± 1%, 1/8W, R18	EA	1
11	29	XAFZZ		0115-1616-T	05991	.RESISTOR, 2.2M, ± 5%, 1/4W, R17	EA	1
11	30	XAFZZ		0115-1385-T	05991	.RESISTOR, 47K, ± 5%, 1/4W, R19	EA	1
11	31	XAFZZ		7101A	09353	.SWITCH	EA	1
11	32	XBFZZ		0148-1003-T	05991	.JACK, TEST, TP1	EA	1
11	33	XBFZZ		0148-1004-T	05991	.JACK, TEST, TP2	EA	1
11	34	XBFZZ		0148-1005-T	0 59 91	.JACK, TEST, TP3	EA	1
11	35	XBFZZ		0148-1010-T	0 59 91	.JACK, TEST, TP0	EA	1
11	36	XBFZZ		0134-1029-T	05991	.TRANSISTOR, 2N4356, Q3	EA	1
11	37	XAFZZ		0018-0009-T	05991	.PAD, TRANSISTOR	EA	1

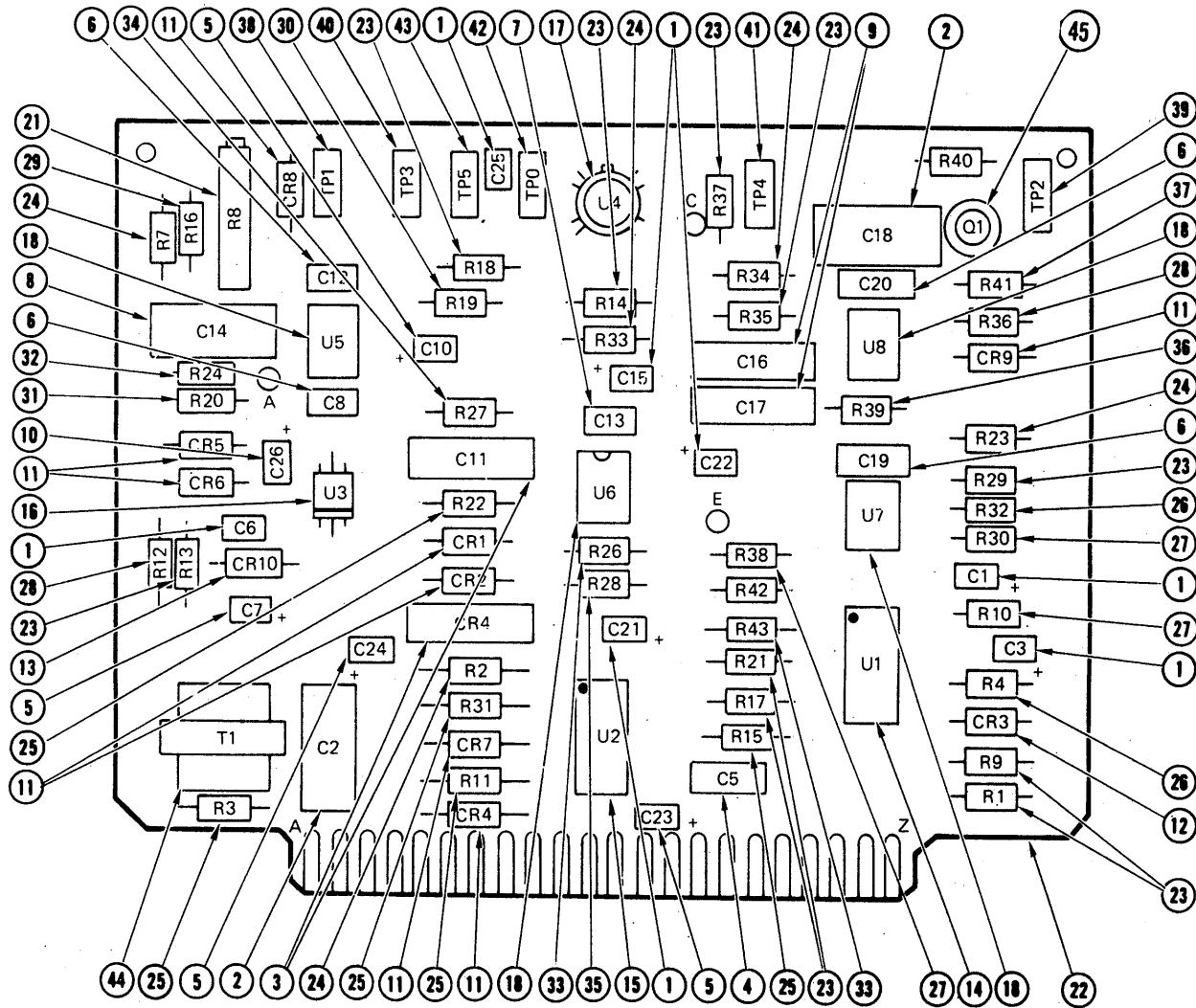


Figure 12. Loop Input and Filter Assembly.

SECTION II

TM 5-6680-310-24P

(1) ILLUSTRATION		(2)	(3)	(4)	(5)	(6)	(7)	(8)
(a) FIG NO.	(b) ITEM NO.	SMR CODE	NATIONAL STOCK NUMBER	PART NUMBER	FSCM	DESCRIPTION USABLE ON CODE	U/M	QTY INC IN UNIT
12		PAFHD	7460-01-054-2083	T276-1087-Z	05991	LOOP INPUT AND FILTER ASSEMBLY	EA	1
12	1	XAFZZ		0114-1153-T	05991	.CAPACITOR, 1 uf, 35V, C1, C3, C6, C15, C21, C22, C25	EA	7
12	2	XAFZZ		0114-1175-T	05991	.CAPACITOR, .22 uf, $\pm 10\%$, 250V, C2, C18	EA	2
12	3	XAFZZ		0114-1176-T	05991	.CAPACITOR, .1 uf, $\pm 10\%$, 250V, C4, C11	EA	2
12	4	XAFZZ		0114-1177-T	05991	.CAPACITOR, 1000 pf, $\pm 5\%$, 100V, CS	EA	1
12	5	XAFZZ		0114-1178-T	05991	.CAPACITOR, 4.7 uf, 35V, C7, C10, C23, C24	EA	4
12	6	XAFZZ		0114-1059-T	05991	.CAPACITOR, 33 pf, $\pm 5\%$, 300V, C8, C12, C19, C20	EA	4
12	7	XAFZZ		0114-1179-T	05991	.CAPACITOR, 3.0 pf, 500V, C13	EA	1
12	8	XAFZZ		0114-1062-T	05991	.CAPACITOR, 1.0 uf, 100V, C14	EA	1
12	9	XAFZZ		0114-1180-T	05991	.CAPACITOR, .0047 uf, 250V, C16, C17	EA	2
12	10	XAFZZ		0114-1152-T	05991	.CAPACITOR, 10 uf, 250V, C26	EA	1
12	11	XAFZZ		0133-1013-T	05991	.DIODE, IN914, CR1, CR2, CR4, CR5, CR6, CR7, CR8, CR9	EA	8
12	12	XAFZZ		0197-1013-T	05991	.DIODE, ZENER, 1N710, CR23	EA	1
12	13	XAFZZ		0197-1033-T	05991	.DIODE, ZENER, 1N4742, CR10	EA	1
12	14	XAFZZ		0176-1108-T	05991	.CIRCUIT, INTEGRATED, MC3302P, U1	EA	1
12	15	XAFZZ		0176-1076-T	05991	.CIRCUIT, INTEGRATED, MM74C00N, U2	EA	1
12	16	XAFZZ		0176-1109-T	05991	.CIRCUIT, INTEGRATED, MFC6040, U3	EA	1
12	17	XAPZZ		0176-1079-T	05991	.CIRCUIT, INTEGRATED, DG200BA, U4	EA	1
12	18	XAFZZ		0176-1012-T	05991	.CIRCUIT, INTEGRATED, LM301AN, U5, U6, U7, U8	EA	4
12		XAFZZ		0110-1002-T	05991	.SOCKET, I.C., 14-PIN	EA	2
12		XAFZZ		0110-1024-T	05991	.SOCKET, I.C., 8-PIN	EA	4
12	21	XAFZZ		0131-1050-T	05991	.POTENTIOMETER, 10K, 3/4W, R8	EA	1
12	22	XAFZZ		0653-1039-B	05991	.BOARD, PRINTED CIRCUIT	EA	1
12	23	XAFZZ		0115-1413-T	05991	.RESISTOR, 10K, $\pm 5\%$, 1/4W, R1, R9, R13, R14, R17, R18, R21, R29, R35, R37	EA	10
12	24	XAFZZ		0115-1003-T	05991	.RESISTOR, 1K, $\pm 5\%$, 1/4W, R2, R7, R23, R33, R34	EA	5
12	25	XAFZZ		0115-1522-T	05991	.RESISTOR, 100K, $\pm 5\%$, 1/4W, R3, R11, R15, R22, R31, R40, R42	EA	7
12	26	XAFZZ		0115-1348-T	05991	.RESISTOR, 4.7K, $\pm 5\%$, 1/4W, R4, R32	EA	2
12	27	XAFZZ		0115-1334-T	05991	.RESISTOR, 3.3K, $\pm 5\%$, 1/4W, R10, R30, R38	EA	3
12	28	XAFZZ		0115-1383-T	05991	.RESISTOR, 5.6K, $\pm 5\%$, 1/4W, R12, R36	EA	2
12	29	XAFZZ		0115-1592-T	05991	.RESISTOR, 270 OHM, $\pm 5\%$, 1/4W, R16	EA	1
12	30	XAFZZ		0115-1008-T	05991	.RESISTOR, 1M, $\pm 5\%$, 1/4W, R19	EA	1
12	31	XAFZZ		0115-1523-T	05991	.RESISTOR, 2.7K, $\pm 5\%$, 1/4W, R20	EA	1
12	32	XAFZZ		0115-1228-T	05991	.RESISTOR, 470K, $\pm 5\%$, 1/4W, R24	EA	1
12	33	XAFZZ		0115-1385-T	05991	.RESISTOR, 47K, $\pm 5\%$, 1/4W, R26, R43	EA	2
12	34	XAFZZ		0115-1229-T	05991	.RESISTOR, 1.5K, $\pm 5\%$, 1/4W, R27	EA	1
12	35	XAFZZ		0115-1333-T	05991	.RESISTOR, 100 OHM, $\pm 5\%$, 1/4W, R28	EA	1
12	36	XAFZZ		0115-1615-T	05991	.RESISTOR, 270K, $\pm 5\%$, 1/4W, R39	EA	1
12	37	XAFZZ		0115-1005-T	05991	.RESISTOR, 220 OHM, $\pm 5\%$, 1/4W, R41	EA	1
12	38	XBFZZ		0148-1003-T	05991	.JACK, TEST, TP1	EA	1
12	39	XBFZZ		0148-1004-T	05991	.JACK, TEST, TP2	EA	1
12	40	XBFZZ		0148-1005-T	05991	.JACK, TEST, TP3	EA	1
12	41	XBFZZ		0148-1006-T	05991	.JACK, TEST, TP4	EA	1
12	42	XBFZZ		0148-1010-T	05991	.JACK, TEST, TP0	EA	1

SECTION II

TM 5-6680-310-24P

(1) ILLUSTRATION		(2)	(3)	(4)	(5)	(6)	(7)	(8)
(a) FIG NO.	(b) ITEM NO.	SMR CODE	NATIONAL STOCK NUMBER	PART NUMBER	FSCM	DESCRIPTION <i>USABLE ON CODE</i>	U/M	QTY INC IN UNIT
12	43	XBFZZ		0148-1007-T	05991	.JACK, TEST, TP5	EA	1
12	44	XAFZZ		0047-1009-T	05991	.TRANSFORMER, T1	EA	1
12	45	XAFZZ		0134-1049-T	05991	.TRANSISTOR, E113, Q1	EA	1

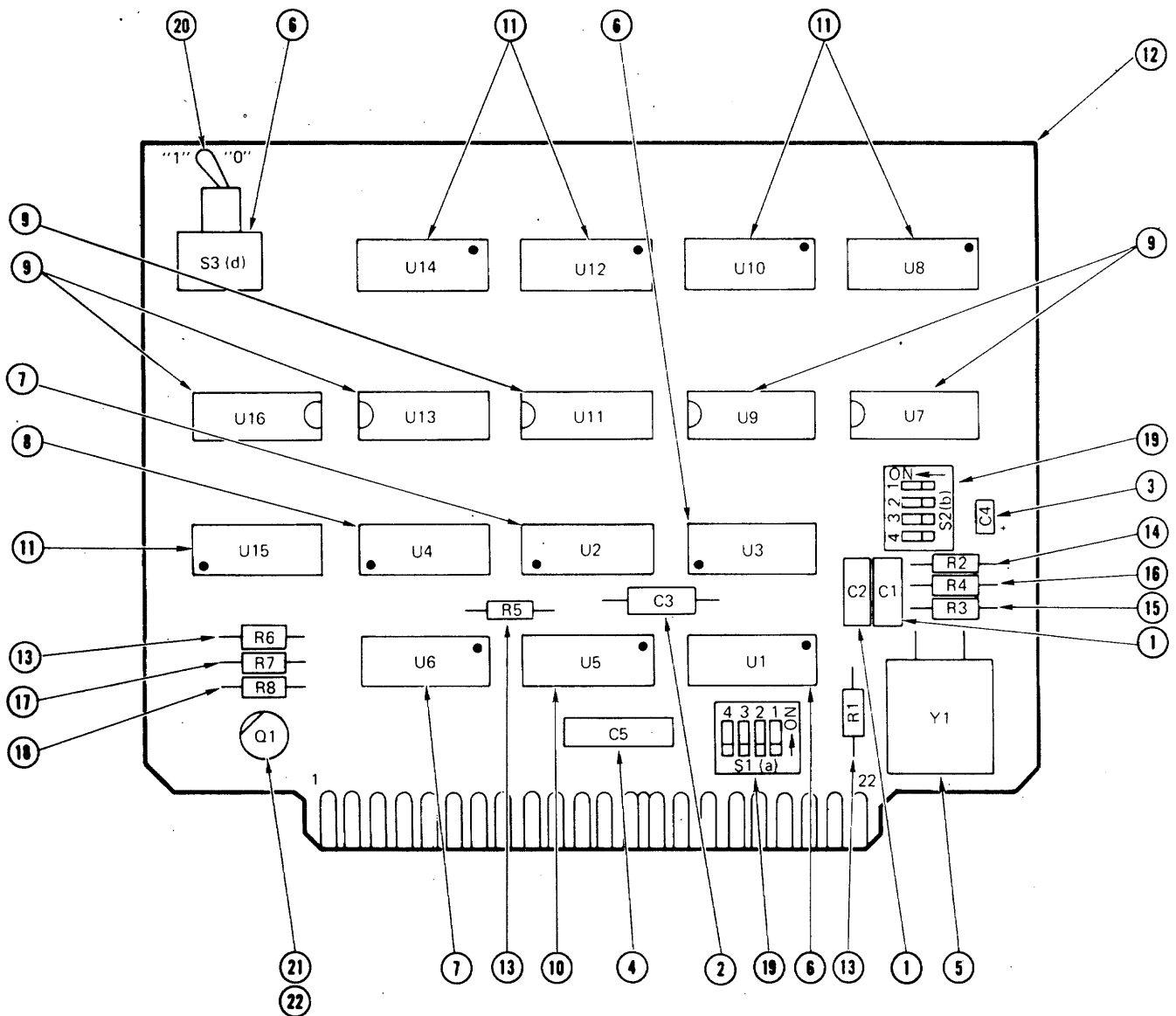


Figure 13. KT Assembly

SECTION II

TM 5-6680-310-24P

(1) ILLUSTRATION		(2)	(3)	(4)	(5)	(6)	(7)	(8)
(a) FIG NO.	(b) ITEM NO.	SMR CODE	NATIONAL STOCK NUMBER	PART NUMBER	FSCM	DESCRIPTION <i>USABLE ON CODE</i>	U/M	QTY INC IN UNIT
13		PAFHD	7460-01-048-0197	T276-1088-Z	05991	KT2 ASSEMBLY	EA	1
13	1	XAFZZ		0114-1059-T	05991	.CAPACITOR, 33 pf, $\pm 5\%$, 500V, C1, C2	EA	2
13	2	XAFZZ		0114-1061-T	05991	.CAPACITOR, 150 pf, $\pm 5\%$, 500V, C3	EA	1
13	3	XAFZZ		0114-1147-T	05991	.CAPACITOR, 4.7 uf, 35V, C4	EA	1
13	4	XAFZZ		0114-1176-T	05991	.CAPACITOR, 0.1 uf, 250V, C5	EA	1
13	5	XAFZZ		0202-1005-T	05991	.CRYSTAL, 1 MHz, ± 20 Hz, Y1	EA	1
13	6	XAFZZ		0176-1052-T	05991	.CIRCUIT, INTEGRATED, MK5009P, U1, U3	EA	2
13	7	XAFZZ		0176-1077-T	05991	.CIRCUIT, INTEGRATED, MM74C73N, U2, U6	EI	2
13	8	XAFZZ		0176-1075-T	05991	.CIRCUIT, INTEGRATED, MM74C02N, U4	EA	1
13	9	XAFZZ		0176-1059-T	05991	.CIRCUIT, INTEGRATED, 74190, U7, U9, U11, U13, U16	EA	5
13	10	XAFZZ		0176-1069-T	05991	.CIRCUIT, INTEGRATED, CD4049AE, U5	EA	1
13	11	XAFZZ		0176-1072-T	05991	.CIRCUIT, INTEGRATED, MC14527CP, U8, U10, U12, U14, U15	EA	5
13	12	XAFZZ		0653-1045-C	05991	.BOARD, PRINTED WIRING	EA	1
13	13	XAFZZ		0115-1413-T	05991	.RESISTOR, 10K, $\pm 5\%$, 1/4W, R1, R5, R6	EA	3
13	14	XAFZZ		0115-1450-T	05991	.RESISTOR, 8.2K, $\pm 5\%$, 1/4W, R2	EA	1
13	15	XAFZZ		0115-1549-T	05991	.RESISTOR, 12M, $\pm 5\%$, 1/4W, R3	EA	
13	16	XAFZZ		0115-1548-T	05991	.RESISTOR, 18M, $\pm 5\%$, 1/4W, R4	EA	1
13	17	XAFZZ		0115-1229-T	05991	.RESISTOR, 1.5K, $\pm 5\%$, 1/4W, R7	EA	1
13	18	XAFZZ		0115-1592-T	05991	.RESISTOR, 270 OHM, $\pm 5\%$, 1/4W, R8	EA	1
13	19	PAFZZ	5930-01-074-3065	206-4	11237	.SWITCH, S1, S2	EA	2
13	20	PAFZZ		7107-A	09353	.SWITCH, S3	EA	1
13	21	XAFZZ		0134-1029-T	05991	.TRANSISTOR, 2N4356, Q1	EA	1
13	22	XAFZZ		0018-0009-T	05991	.PAD, TRANSISTOR	EA	1

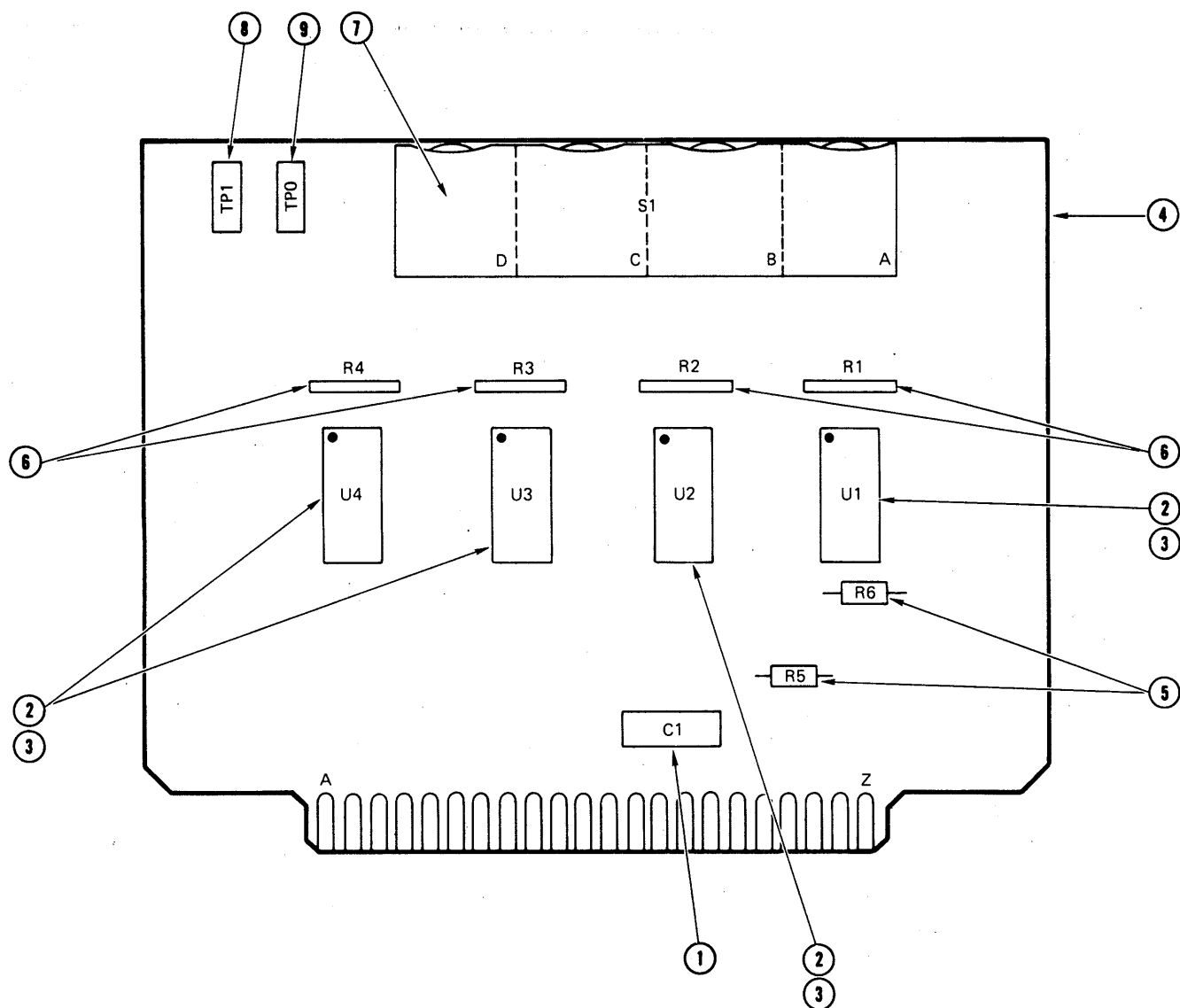


Figure 14. Scaler Assembly.

SECTION II

TM 5-6680-310-24P

(1) ILLUSTRATION		(2)	(3)	(4)	(5)	(6)	(7)	(8)
(a) FIG NO.	(b) ITEM NO.	SMR CODE	NATIONAL STOCK NUMBER	PART NUMBER	FSCM	DESCRIPTION <i>USABLE ON CODE</i>	U/M	QTY INC IN UNIT
14		PAFHD	7460-01-048-0196	T276-1089-Z	05991	SCALER ASSEMBLY	EA	1
14	1	XAFZZ		0114-1058-T	05991	.CAPACITOR, 0.1 uf, ± 10%, 250V, C1	EA	1
14	2	XAFZZ		0176-1072-T	05991	.CIRCUIT, INTEGRATED, MC14527CP, U1, U2, U3, U4	EA	4
14	3	XAFZZ		0110-1003-T	05991	.SOCKET, I.C. , 16-PIN	EA	4
14	4	XAFZZ		0653-1036-C	05991	.BOARD, PRINTED CIRCUIT	EA	1
14	5	XAFZZ		0115-1522-T	05991	.RESISTOR, 100K, ± 5%, 1/4W, R5, R6	EA	4
14	6	XAFZZ		0115-1622-T	05991	.RESISTOR (DALE, CSP-06E-01-104M), R1, R2, R3, R4	EA	4
14	7	PAFZZ		210372	19234	.SWITCH, S1	EA	1
14	8	XBFZZ		0148-1003-T	05991	.JACK, TEST, TP1	EA	1
14	9	XBFZZ		0148-1010-T	05991	.JACK, TEST, TP0	EA	1

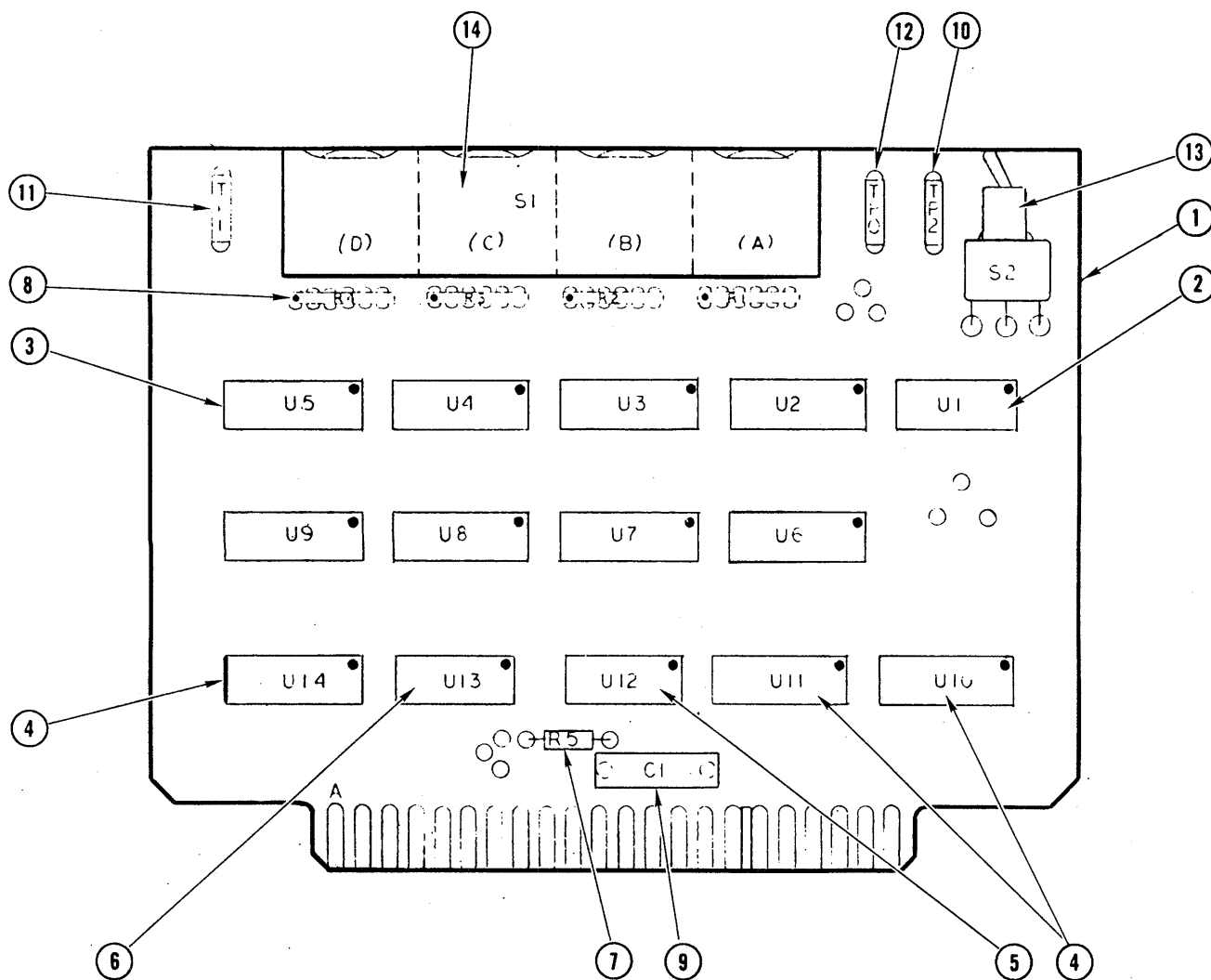


Figure 15. Preset Up/Down Counter Assembly.

SECTION II

TM 5-6680-310-24P

(1) ILLUSTRATION		(2)	(3)	(4)	(5)	(6)	(7)	(8)
(a) FIG NO.	(b) ITEM NO.	SMR CODE	NATIONAL STOCK NUMBER	PART NUMBER	FSCM	DESCRIPTION <i>USABLE ON CODE</i>	U/M	QTY INC IN UNIT
15		PAFDL	7460-01-048-0195	T276-1090-Z	05991	PRESET UP-DOWN COUNTER	EA	1
15	1	XAPZZ		T276-1105-T	05991	PRINTED WIRING BOARD	EA	1
15	2	XAPZZ		0176-1190-T	05991	IC DUAL NOR GATE U1	EA	1
15	3	XAFZZ		0176-1191-T	05991	IC BCD UP/DOWN COUNTER U2-U9	EA	8
15	4	XAFZZ		0176-1192-T	05991	IC HEX BUFFER U10, 11, 14	EA	3
15	5	XAPZZ		0176-1147-T	05991	IC QUAD NOR GATE U12	EA	1
15	6	XAFZZ		0176-1193-T	05991	IC TRIPLE NOR GATE U13	EA	1
15	7	XAFZZ		0115-1522-T	05991	RESISTOR, 100K \pm 5%, 1/4W, R5	EA	1
15	8	XAFZZ		0115-1622-T	05991	RESISTOR, 100K \pm 20%, R1-R4	EA	4
15	9	XAFZZ		0114-1176-T	05991	CAPACITOR, 0.1 uf, 250V, 10%, C1	EA	1
15	10	XAFZZ		0148-1004-T	05991	TEST JACK, RED, TP2	EA	1
15	11	XAFZZ		0148-1003-T	05991	TEST JACK, BROWN, TP1	EA	1
15	12	XAFZZ		0148-1010-T	05991	TEST JACK, BLACK, TP0	EA	1
15	13	XAFZZ		0068-1039-T	05991	SWITCH, SPDT, S2	EA	1
15	14	XAFZZ		0068-1080-T	05991	SWITCH, BCD, THUMBWHEEL, S1	EA	1

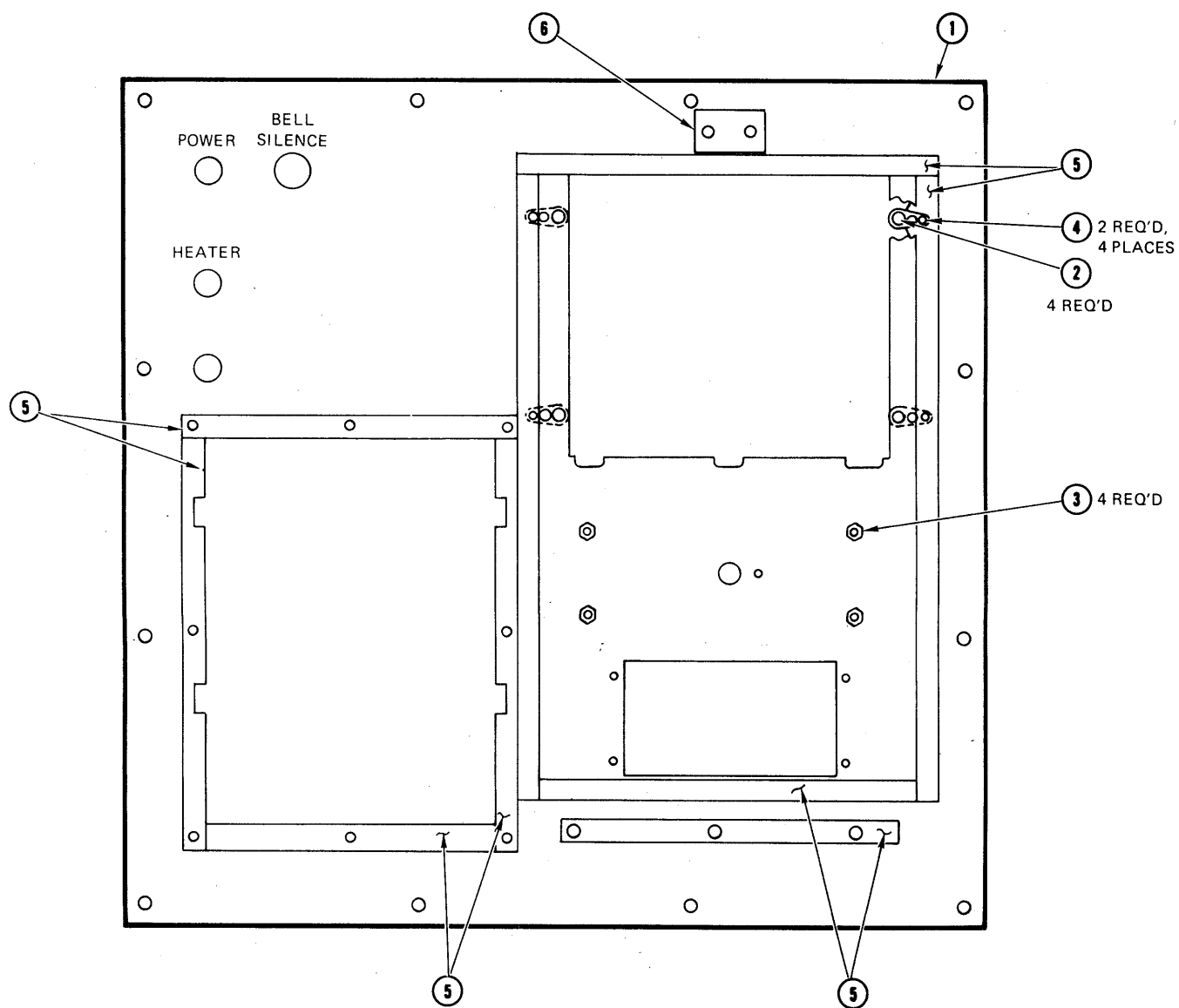


Figure 16. Mounting Panel.

SECTION II

TM 5-6680-310-24P

(1) ILLUSTRATION		(2)	(3)	(4)	(5)	(6) DESCRIPTION	(7)	(8)
(a) FIG NO.	(b) ITEM NO.	SMR CODE	NATIONAL STOCK NUMBER	PART NUMBER	FSCM	<i>USABLE ON CODE</i>	U/M	QTY INC IN UNIT
16		PAOFZ	6680-01-057-7730	T276-0006-Z	05991	MOUNTING PANEL, BATCH INTERFACE DETECTOR	EA	1
16	1	XAFZZ		T276-0094-Z	05991	PANEL	EA	1
16	2	PAOZZ	5310-00-734-1850	T276-0095-Z	05991	NUT, MINIATURE, ONE LUG ANCHOR	EA	4
16	3	PAOZZ	5310-01-044-3828	T276-0096-Z	05991	NUT, CAPTIVE	EA	4
16	4	PAOZZ	5320-01-047-8171	T276-0097-Z	05991	RIVET, FLAT HEAD, 3/32 DIA	EA	8
16	5	PAOZZ	5330-01-044-2868	T276-0098-Z	05991	GASKET, SILICONE RUBBER, 1/8 X 3/8	FT	V
16	6	PAOZZ	5330-01-044-5163	T276-0099-Z	05991	GASKET, SILICONE RUBBER, 1/16" THICK	FT	V

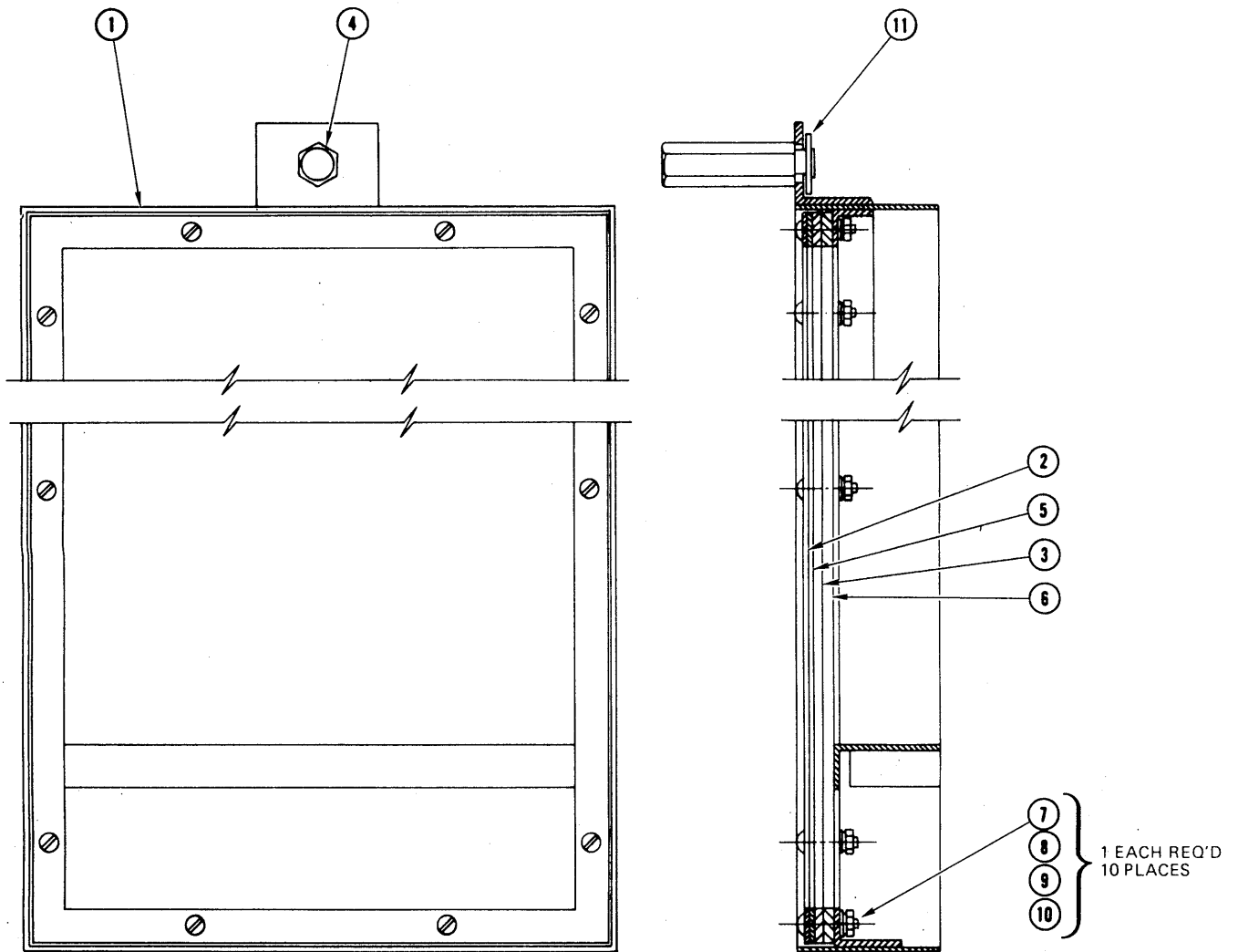


Figure 17. Recorder Cover Assembly.

SECTION II

TM 5-6680-310-24P

(1) ILLUSTRATION		(2)	(3)	(4)	(5)	(6)	(7)	(8)
(a) FIG NO.	(b) ITEM NO.	SMR CODE	NATIONAL STOCK NUMBER	PART NUMBER	FSCM	DESCRIPTION <i>USABLE ON CODE</i>	U/M	QTY INC IN UNIT
17		PAOFZ	6680-01-057-4184	T276-0012-Z	05991	GROUP 04 - RECORDER ASSEMBLY RECORDER COVER ASSEMBLY	EA	1
17	1	XAFOZ		T276-0103-Z	05991	.WELDMENT, RECORDER COVER	EA	1
17	2	PAOZZ	6680-01-048-2819	T276-0104-Z	05991	.RETAINER, WINDOW	EA	1
17	3	PAOZZ	6680-01-048-2820	T276-0105-Z	05991	.WINDOW	EA	1
17	4	PAOZZ	5340-01-048-6300	T276-0106-Z	05991	.NUT, LATCH	EA	1
17	5	PAOZZ	5330-00-044-5163	T276-0099-Z	05991	.GASKET, SILICONE RUBBER, .06" THICK	FT	V
17	6	PAOZZ	5330-01-044-2868	T276-0098-Z	05991	.GASKET, SILICONE RUBBER, 1/8 X 3/8	FT	V
17	7	PAOZZ	5310-00-934-9748	MS35649-244	96906	.NUT, HEX, 4-40	EA	10
17	8	PAOZZ		0019-1019-J	05991	.SCREW, PAN HEAD, 4-40 x 5/8	EA	10
17	9	PAOZZ	5310-00-057-0573	0003-1027-K	05991	.WASHER, FLAT, NO. 4	EA	10
17	10	PAOZZ	5310-00-933-8118	MS35338-78	96906	.WASHER, SPLIT LOCK, NO. 4	EA	10
17	11	PAOZZ	5310-00-625-5756	MS51795-812	96906	.WASHER, FLAT, NO. 4	EA	1

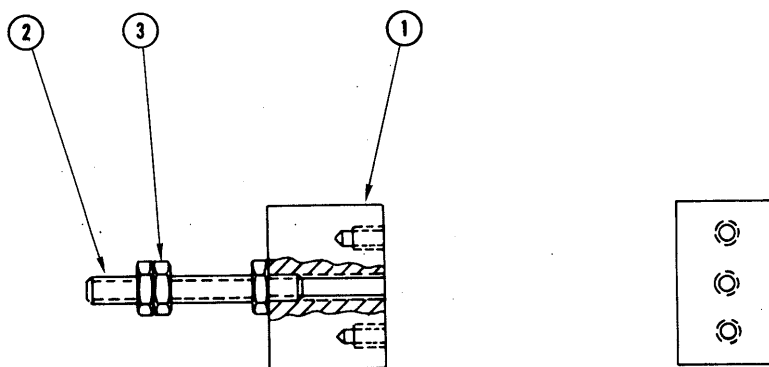


Figure 18. Latch Bracket Assembly.

SECTION II

TM 5-6680-310-24P

(1) ILLUSTRATION		(2)	(3)	(4)	(5)	(6) DESCRIPTION	(7)	(8)
(a) FIG NO.	(b) ITEM NO.	SMR CODE	NATIONAL STOCK NUMBER	PART NUMBER	FSCM	<i>USABLE ON CODE</i>	U/M	QTY INC IN UNIT
18		PAOZZ	5340-01-046-4075	T276-0014-Z	05991	LATCH BRACKET ASSEMBLY	EA	1
18	1	XBOZZ		T276-0107-Z	05991	.BLOCK, LATCH	EA	1
18	2	PAOZZ	5307-01-045-3041	MS15795-812	96906	.SCREW, STATIONARY, LATCH	EA	1
18	3	PAOZZ	5310-00-199-6539	MS35649-104	96906	.NUT, HEX, 10-24 UNC-2B	EA	3

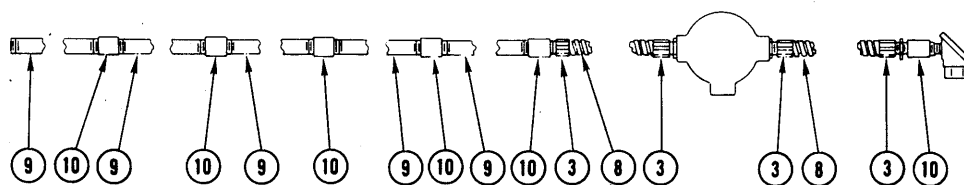
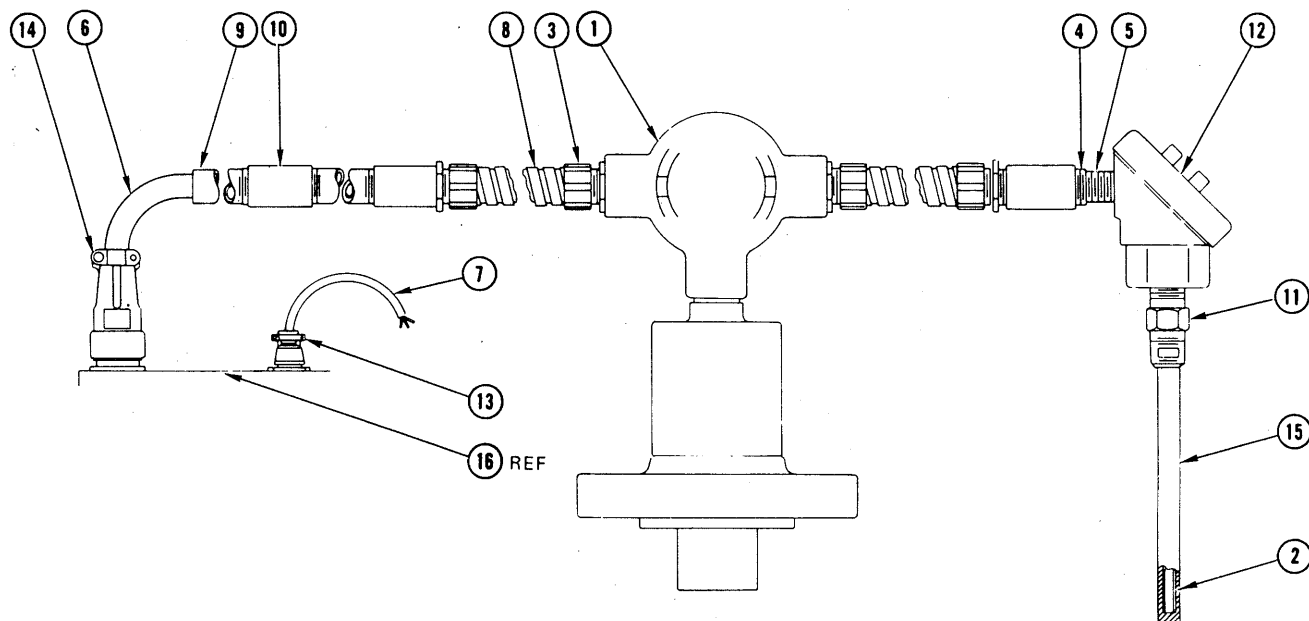


Figure 19. Batch Interface Detector System Assembly.

SECTION II

TM 5-6680-310-24P

(1) ILLUSTRATION		(2)	(3)	(4)	(5)	(6)	(7)	(8)
(a) FIG NO.	(b) ITEM NO.	SMR CODE	NATIONAL STOCK NUMBER	PART NUMBER	FSCM	DESCRIPTION <i>USABLE ON CODE</i>	U/M	QTY INC IN UNIT
19				T276-0154-Z	05991	GROUP 05 - DETECTOR HEAD ASSEMBLY		
19	1	XBFHZ		T276-1059-Z	05991	BATCH INTERFACE DETECTOR SYSTEM ASSEMBLY	EA	1
19	2	XBFHZ		T276-0130-Z	05991	.PROBE, DENSITOMETER	EA	1
19	3	PAOZZ		T276-0130-Z	05991	.PROBE, TEMPERATURE	EA	1
19	4	PAOZZ		0500-1001-L	05991	.ADAPTER, 3/4" FLEX. CONDUIT, 3/4" NPT	EA	4
19	5	PAOZZ		0500-1008-L	05991	.BUSHING, 3/4"-1/2" REDUCING	EA	1
19	6	PAOZZ		0804-0009-L	05991	.NIPPLE, CLOSE, CONDUIT, 1/2"	EA	1
19	7	PAOZZ	5995-01-050-9725	T276-0145-Z	05991	.CABLE, SIGNAL	EA	1
19	8	PAOZZ	6150-01-055-0197	T276-0146-Z	05991	.CABLE, POWER	EA	1
19	9	XBFZZ		T276-0136-Z	05991	.CONDUIT, 1/2" FLEX.	EA	1
19	10	XBFZZ		T276-0135-Z	05991	.CONDUIT, 3/4" RIGID	EA	5
19	11	XBOZZ		T276-0137-Z	05991	.COUPLING, 3/4" RIGID CONDUIT	EA	6
19	12	PAOZZ		F122	08990	.FITTING, FLUID SEAL	EA	1
19	13	PAOZZ		F102-4T	08990	.CONNECTION, HEAD	EA	1
19	14	PAOZZ	5935-00-731-0139	MS3126-F12-10S	96906	.PLUG, STRAIGHT WITH TERM.	EA	1
19	15	PAOZZ	5935-00-162-1513	MS3106-F16-10P	96906	.PLUG, STRAIGHT, INTEGRAL CABLE CLAMP	EA	1
19		XBFZZ		F222-U60	08990	.THERMOWELL	EA	1

SECTION IV

NATIONAL STOCK NUMBER AND PART NUMBER INDEX

TM 5-6680-310-24P

STOCK NUMBER	FIGURE NO.	ITEM NO.	STOCK NUMBER	FIGURE NO.	ITEM NO.
5310-00-042-6758	1	57	5330-01-044-5163	16	6
5340-00-044-2821	1	41	5310-01-044-5222	5	27
5305-00-050-9225	1	36	5365-01-044-5375	1	59
5305-00-054-5647	1	32	5365-01-044-5375	3	10
5305-00-054-5647	4	1	5305-01-044-7282	4	44
5305-00-054-5657	4	18	5305-01-044-7292	5	8
5305-00-054-6650	1	33	5305-01-044-7293	5	10
	4	19	5330-01-044-7514	1	8
5305-00-054-6651	4	20	6680-01-044-7772	1	10
5305-00-054-6668	1	34	6680-01-044-7773	1	44
5305-00-054-6670	1	35	6680-01-044-7774	2	8
5310-00-057-0573	17	9	6680-01-044-8750	1	66
5310-00-082-1349	3	12	6680-01-044-8857	1	31
5935-00-162-1513	1	3	6680-01-044-8859	2	6
	19	14	6680-01-045-0807	1	58
5310-00-199-6539	1	24	5961-01-045-4630	5	1
	18	3	5935-01-045-4831	1	40
6240-00-246-5052	1	22	6685-01-046-0321	1	30
5930-00-253-0426	1	45	5330-01-046-1229	1	6
5325-00-276-4205	1	9	5340-01-046-4075	1	64
5920-00-280-9328	5	2	5340-01-046-4075	is	1
5310-00-543-5933	1	48	5330-01-046-5416	1	7
	5	22	6680-01-047-0008	2	9
	8	47	5307-01-047-1857	3	18
	8	48	5320-01-047-8171	16	4
5310-00-550-3715	5	20	7460-01-048-0196	4	50
5310-00-582-5677	1	52	7460-01-048-0196	4	51
5310-00-595-6211	1	48		14	
	8	47		15	
5310-00-616-3555	5	21	7460-01-048-0197	4	49
5310-00-619-1148	1	51		13	
5310-00-625-5756	17	11	7460-01-048-0198	1	28
5930-00-655-4247	1	47	5950-01-048-0199	4	46
5310-00-655-6932	1	25		10	
5935-00-731-0139	19	13	6680-01-048-2819	17	2
5310-00-734-1850	16	2	6680-01-048-2820	17	3
5935-00-780-8667	4	4	5340-01-048-6300	17	4
5310-00-782-1349	1	49	6680-01-049-8815	4	16
	5	19	5940-01-050-5789	4	45
	9		5310-01-050-6100	4	11
5935-00-839-3468	3	3	5310-01-050-6101	8	18
5935-00-859-3468	4	5	5310-01-050-6106	5	26
5310-00-880-5978	1	50	5330-01-050-6135	4	35
5935-00-933-4994	1	2	5305-01-050-9607	5	9
5310-00-933-8118	1	53	5305-01-050-9608	5	11
5310-00-933-8120	1	56	5305-01-050-9609	8	40
5310-00-934-9748	1	26	5995-01-050-9725	19	6
5310-00-934-9759	1	23	5365-01-051-7935	4	25
5310-00-934-9761	1	27	5310-01-051-7942	5	25
	4	12	5365-01-051-9458	4	21
6610-00-946-3632	4	29	5365-01-051-9459	4	23
5930-00-964-4697	5	15	7460-01-054-2083	4	48
5640-01-043-3521	1	18		12	
5930-01-043-7823	1	46	6145-01-057-2927	6	12
5950-01-043-7839	5	28	6145-01-057-2926	6	9
	6		6145-01-057-3691	6	7
5640-01-043-8522	2	7	6145-01-057-3692	6	11
5640-01-043-8524	1	14	6145-01-057-3693	6	13
5640-01-043-8525	1	16	6145-01-057-3694	6	14
5640-01-043-8526	1	17	6145-01-057-3695	6	15
5961-01-043-9548	10	16	6145-01-057-3696	6	5
	7	2	6680-01-057-4184	1	63
5961-01-043-9549	5	18	6145-01-057-5476	6	6
6240-01-044-0073	1	21	6145-01-057-5477	6	8
5365-01-044-2822	1	37	6145-01-057-5478	6	10
	1	42	6145-01-057-5479	6	16
5365-01-044-2823	1	43	6210-01-057-6097	1	19
5365-01-044-2824	4	22	6680-01-057-7730	16	
5310-01-044-2826	5	5	6145-01-057-8053	6	18
5310-01-044-2827	5	7	6145-01-057-8054	6	19
5961-01-044-2646	5	17	6680-01-057-8387	1	65
5310-01-044-2827	5	6	6145-01-057-9241	6	17
5330-01-044-2868	16	5	6145-01-057-9242	6	1
5961-01-044-3799	4	26	6145-01-057-9242	6	4
5961-01-044-3800	5	29	5935-01-058-1059	1	5
	7		5990-01-058-9909	4	7
5310-01-044-3828	3	22	6680-01-069-6847	1	60
5310-01-044-5150	3	5	5930-01-074-3065	9	46
	4	10		13	19
	5	4	5310-01-595-6211	4	27
	17	7			

SECTION IV

NATIONAL STOCK NUMBER AND PART NUMBER INDEX

TM 5-6680-310-24P

PART NUMBER	FSCM	FIG. NO.	ITEM NO.	PART NUMBER	FSCM	FIG. NO.	ITEM NO.
F102-4T	08990	19	12	T276-0032-Z	05991	1	39
F122	08990	19	11	T276-0044-Z	05991	1	7
F222-U60	08990	19	15	T276-0045-Z	05991	1	8
MS15795-303	96906	4	27			4	6
MS15795-804	96906	3	12	T276-0057-Z	05991	2	5
		4	28	T276-0059-Z	05991	2	1
MS15957-25	96906	3	7	T276-0060-Z	05991	2	2
MS15957-27	96906	3	8	T276-0061-Z	05991	2	6
MS15957-28	96906	3	9	T276-0062-Z	05991	2	3
MS24524-22	96906	1	47	T276-0063-Z	05991	2	4
MS24693-270	96906	5	13	T276-0064-Z	05991	3	16
MS24693-48	96906	5	12	T276-0065-Z	05991	3	20
MS25089-2C	96906	1	45	T276-0066-Z	05991	3	4
MS3100-F16-10P	96906	1	3	T276-0067-Z	05991	3	1
MS3106-F16-10P	96906	19	14	T276-0068-Z	05991	3	2
MS3120-F12-10P	96906	1	2	T276-0069-Z	05991	3	10
MS3126-F12-10S	96906	19	13	T276-0070-Z	05991	3	6
MS35333-70	96906	5	20			4	15
MS35333-71	96906	5	21	T276-0072-Z	05991	4	43
MS35333-73	96906	5	22	T276-0073-Z	05991	4	33
		8	48	T276-0074-z	05991	4	37
MS35338-78	96906	1	53	T276-0075-Z	05991	4	13
		17	10	T276-0076-Z	05991	4	35
		3	14	T276-0077-Z	05991	4	41
		4	30	T276-0078-Z	05991	4	40
MS35338-79	96906	1	54	T276-0079-Z	05991	4	25
		4	31	T276-0080-Z	05991	4	2
MS35338-80	96906	1	55	T276-0081-Z	05991	4	16
MS35338-81	96906	1	56	T276-0083-Z	05991	4	1
MS35338-82	96906	1	57	T276-0087-Z	05991	4	9
MS35649-104	96906	1	24	T276-0089-Z	05991	4	21
		18	3	T276-0090-Z	05991	4	22
MS35649-44	96906	1	26	T276-0091-Z	05991	4	23
MS35649-64	96906	1	27	T276-0092-Z	05991	4	44
		4	12	T276-0094-Z	05991	16	1
MS35649-84	96906	1	23	T276-0095-Z	05991	16	2
MS35690-430	96906	1	25	T276-0096-Z	05991	16	3
MS401E-82-115-61-15	33454	1	31	T276-0096-Z	05991	3	22
MS51795-803	96906	1	48	T276-0097-Z	05991	16	4
		8	47	T276-0098-Z	05991	16	5
MS51795-804	96906	1	49			17	6
		5	19			4	36
		9		T276-0099-Z	05991	16	6
MS51795-807	96906	1	50			17	5
MS51795-808	96906	1	51	T276-0100-Z	05991	5	23
MS51795-810	96906	1	52	T276-0101-Z	05991	3	18
MS51795-812	96906	17	11			4	34
MS51957-13	96906	1	32	T276-0103-Z	05991	17	1
		4	1	T276-0104-Z	05991	17	2
MS51957-17	96906	4	18	T276-0105-Z	05991	17	3
MS51957-26	96906	1	33	T276-0106-Z	05991	17	4
		4	19	T276-0107-Z	05991	18	1
MS51957-27	96906	4	20	T276-0118-Z	05991	2	7
MS51957-43	96906	1	34	T276-0120-Z	05991	2	8
MS51957-45	96906	1	35	T276-0121-Z	05991	2	9
MS51957-59	96906	1	36	T276-0123-Z	05991	3	21
MS51957-61	96906	1	37	T276-0124-Z	05991	3	17
MS51957-80	96906	1	38			4	38
MRA14-P-G	81312	4	5	T276-0125-Z	05991	4	39
MRA-14S-G	81312	3	3	T276-0130-Z	05991	19	2
NCN-G-2-2-4	70709	4	42	T276-0135-Z	05991	19	9
NCN-6-2-2-4	70709	3	19	T276-0137-Z	05991	19	10
T276-0002-Z	05991	1	67	T276-0142-Z	05991	1	17
T276-0003-Z	05991	1	58	T276-0143-Z	05991	1	18
		2		T276-0145-Z	05991	19	6
T276-0004-Z	05991	1	59	T276-0146-Z	05991	11	7
		3		T276-0148-Z	05991	4	3
T276-0005-Z	05991	1	60	T276-0150-Z	05991	5	27
		4		T276-0151-Z	05991	4	45
T276-0006-Z	05991	16				9	
T276-0007-Z	05991	1	41	T276-0154-Z	05991	1	68
T276-0008-Z	05991	1	42			19	
T276-0009-Z	05991	1	43	T276-0172-Z	05991	4	24
T276-0010-Z	05991	1	44	T276-1059-Z	05991	19	1
T276-0011-Z	05991	4	32	T276-1065-Z	05991	1	61
T276-0012-Z	05991	1	63	T276-1068-Z	05991	1	28
		17		T276-1080-Z	05991	3	27
T276-0013-Z	05991	1	29	T276-1081-Z	05991	3	25
T276-0014-Z	05991	1	64	T276-1082-Z	05991	3	26
		18		T276-1083-Z	05991	3	29
T276-0015-Z	05991	1	65	T276-1085-Z	05991	10	
T276-0016-Z	05991	1	6			4	46
T276-0017-Z	05991	1	66	T276-1086-Z	05991	11	
T276-0019-Z	05991	2	7			4	47
T276-0021-Z	05991	1	14	T276-1087-Z	05991	12	
T276-0022-Z	05991	1	15			4	48
T276-0023-Z	05991	1	16	T276-1088-Z	05991	13	

SECTION IV

NATIONAL STOCK NUMBER AND PART NUMBER INDEX

TM 5-6680-310-24P

PART NUMBER	FSCM	FIG. NO.	ITEM NO.	PART NUMBER	FSCM	FIG. NO.	ITEM NO.
T276-1088-Z	05991	4	49	0114-1153-T	05991	9	4
T276-1089-Z	05991	14		0114-1154-T	05991	9	6
		4	50	0114-1157-T	05991	8	12
T276-1090-Z	05991	15		0114-1158-T	05991	8	11
		4	51	0114-1159-T	05991	8	3
T312-42-Y	16877	4	7	0114-1175-T	05991	10	7
V-51 TYPE JB10G	33057	1	20			12	2
0003-1027-K	05991	17	9	0114-1176-T	05991	10	8
0005-1004-U	05991	7	3			11	4
0012-1008-T	05991	8	49			12	3
0012-1011-T	05991	6	9			13	4
		9				15	9
0012-1012-T	05991	6	12	0114-1177-T	05991	10	3
		9				11	6
0012-1013-T	05991	6	6			12	4
0012-1014-T	05991	6	15	0114-1178-T	05991	11	3
		9				12	5
0012-1015-T	65991	6	7	0114-1179-T	05991	12	7
0012-1016-T	05991	6	11	0114-1180-T	05991	12	9
		9		0114-1181-T	05991	10	6
0012-1017-T	05991	6	13	0114-1199-T	05991	11	5
		9		0115-0004-T	05991	8	38
0012-1019-T	05991	6	14	0115-0020-T	05991	10	27
0012-1020-T	05991	6	16	0115-0286-T	05991	11	19
0012-1021-T	05991	6	8	0115-1003-T	05991	10	20
0012-1023-T	05991	6	10			11	20
0012-1024-T	05991	6	5			12	24
0012-1025-T	05991	6	17			9	29
0012-1027-T	05991	6	4	0115-1005-T	05991	12	37
0012-1061-T	05991	6	18	0115-1008-T	05991	10	23
0012-1063-T	05991	6	19			12	30
0018-0009-T	05991	11	37	0115-1024-T	05991	9	36
		13	22	0115-1046-T	05991	8	28
0018-1007-T	05991	8	46	0115-1086-T	05991	8	34
0018-1010-T	05991	10	41	0115-1090-T	05991	8	31
0019-1019-J	05991	17	8	0115-1114-T	05991	9	34
0038-1058-T	05991	3	24	0115-1118-T	05991	8	33
0038-1059-T	05991	3	23	0115-1172-T	05991	8	32
0047-1009-T	05991	12	44	0115-1222-T	05991	10	32
0047-1033-T	05991	6	1	0115-1228-T	05991	12	32
0047-2005-T	05991	9	55			9	35
0068-1019-T	05991	5	16	0115-1229-T	05991	12	34
0068-2014-T	05991	5	15			13	17
0103-1003-T	05991	3	28			15	10
0108-1014-H	05991	5	24	0115-1277-T	05991	11	28
0110-1002-T	05991	10	16	0115-1301-T	05991	9	26
		11	15	0115-1333-T	05991	10	31
		12	19			12	35
		15	7			8	23
		8	42	0115-1333-T	05991	9	38
0110-1003-T	05991	10	15	0115-1334-T	05991	11	23
		14	3			12	27
0110-1024-T	05991	10	17			8	21
		11	16	0115-1340-T	05991	9	25
		12	20	0115-1344-T	05991	9	24
0111-0061-J	05991	8	41	0115-1346-T	05991	11	25
0111-1013-J	05991	5	2	0115-1348-T	05991	12	26
0114-1058-T	05991	14	1	0115-1349-T	05991	10	22
0114-1059-T	05991	10	2			8	36
		12	6	0115-1383-T	05991	10	34
		13	1			12	28
0114-1061-T	05991	10	9	0115-1384-T	05991	10	28
		11	1			11	21
		13	2	0115-1385-T	05991	11	30
0114-1062-T	05991	10	4			12	33
		12	8	0115-1388-T	05991	10	19
0114-1077-T	05991	9	5			9	31
0114-1080-T	05991	8	2	0115-1389-T	05991	10	33
		9	1	0115-1413-T	05991	10	25
0114-1085-T	05991	8	9			11	22
0114-1128-T	05991	8	8			12	23
0114-1130-T	05991	9	7			13	13
0114-1140-T	05991	8	5			15	9
0114-1144-T	05991	10	5			8	39
		8	7			9	41
0114-1146-T	05991	8	4	0115-1416-T	05991	8	30
0114-1147-T	05991	13	3	0115-1441-T	05991	8	22
		15	5	0115-1447-T	05991	8	37
		8	6	0115-1450-T	05991	13	14
0114-1151-T	05991	9	3	0115-1522-T	05991	10	24
0114-1152-T	05991	11	7			11	26
		12	10			12	25
		8	10			15	7
		9	2	0115-1523-T	05991	10	29
0114-1153-T	05991	10	1			12	31
		11	2	0115-1548-T	05991	13	16
		12	1	0115-1549-T	05991	13	15

SECTION IV

NATIONAL STOCK NUMBER AND PART NUMBER INDEX

TM 5-6680-310-24P

PART NUMBER	FSCM	FIG. NO.	ITEM NO.	PART NUMBER	FSCM	FIG. NO.	ITEM NO.
0115-1550-T	05991	10	26	0148-1018-T	05991	9	54
0115-1592-T	05991	12	29	0148-1019-T	05991	9	50
		13	18	0148-1020-T	05991	9	52
0115-1613-T	05991	10	30	0148-1021-T	05991	9	53
0115-1615-T	05991	11	24	0152-1034-T	05991	3	30
		12	36	0162-1012-T	05991	7	1
0115-1616-T	05991	11	29	0169-1002-T	05991	6	3
0115-1622-T	05991	14	6	0176-1009-T	05991	9	17
0115-1632-T	05991	8	35	0176-1012-T	05991	10	12
0115-1634-T	05991	8	27			11	13
0115-1635-T	05991	a	24			12	18
0115-1636-T	05991	8	26	0176-1013-T	05991	8	16
0115-1663-T	05991	9	28			9	18
0115-1665-T	05991	9	27	0176-1052-T	05991	13	6
0115-1666-T	05991	9	30	0176-1057-T	05991	11	9
0115-1667-T	05991	9	33	0176-1057-T	05991	9	15
0115-1669-T	05991	9	43	0176-1059-T	05991	13	9
0115-1671-T	05991	9	32	0176-1067-T	05991	10	13
0115-1672-T	05991	9	37	0176-1068-T	05991	10	11
0115-1674-T	05991	9	39			11	10
0115-1675-T	05991	9	40	0176-1069-T	05991	13	10
0115-1676-T	05991	9	42	0176-1072-T	05991	13	11
0115-1680-T	05991	9	44			14	2
0115-1683-T	05991	8	29			9	13
0115-1684-T	05991	8	25	0176-1074-T	05991	9	19
0115-1716-T	05991	10	21	0176-1075-T	05991	13	8
0115-1734-T	05991	6	2	0176-1076-T	05991	12	15
0115-2019-T	05991	11	27			9	16
0119-0008-J	05991	8	40	0176-1077-T	05991	13	7
0119-0009-J	05991	5	8			9	14
0119-0013-J	05991	3	31	0176-1079-T	05991	12	17
0119-0032-J	05991	5	7	0176-1084-T	05991	10	14
0119-0040-J	05991	5	9	0176-1085-T	05991	8	15
0119-1016-J	05991	5	11	0176-1090-T	05991	9	20
0119-1028-J	05991	5	10	0176-1108-T	05991	11	12
		7	4			12	14
0121-1001-T	05991	9	45	0176-1109-T	05991	12	16
0124-1033-T	05991	4	26	0176-1110-T	05991	11	11
0131-1050-T	05991	12	21	0197-1013-T	05991	12	12
0131-1061-T	05991	4	14	0197-1027-T	05991	9	8
0131-1062-T	05991	8	19	0197-1033-T	05991	12	13
0131-1063-T	05991	8	20	0200-1003-T	05991	8	17
0131-1074-T	05991	11	18			9	22
0133-1011-T	05991	8	14	0202-1005-T	05991	13	5
0133-1013-T	05991	10	10	0204-1001-T	05991	9	57
		11	8	0500-1008-L	05991	19	4
		12	11	0500-0016-J	05991	3	33
		9	10	0500-0021-J	05991	5	5
0133-1022-T	05991	9	11	0500-0032-J	05991	5	6
0133-1023-T	05991	5	1	0500-0036-J	05991	5	4
0133-1025-T	05991	8	13			7	7
0133-1028-T	05991	9	12	0500-1001-L	05991	19	3
0134-0011-T	05991	10	39	0500-1004-D	05991	5	31
0134-1029-T	05991	10	38	0500-1041-J	05991	3	32
		11	36	0500-1044-J	05991	8	18
		13	21	0500-0048-J	05991	4	11
0134-1034-T	05991	10	40	0500-1049-J	05991	5	25
0134-1049-T	05991	12	45	0500-1050-J	05991	5	26
0134-1053-T	05991	5	18	0500-2006-J	05991	3	5
0134-1054-T	05991	7	2			17	7
0134-1055-T	05991	5	17	0653-1034-T	05991	11	17
		8	45	0653-1035-T	05991	10	18
0134-1056-T	05991	8	44	0653-1036-C	05991	14	4
0134-1060-T	05991	9	56	0653-1039-B	05991	12	22
0148-1003-T	05991	10	36	0653-1048-C	05991	9	23
		11	32	0655-1043-B	05991	5	30
		12	38	0655-1045-C	05991	13	12
		14	8	0655-1011-C	05991	8	1
		15	11	0655-1043-B	05991	8	
0148-1004-T	05991	10	37	0655-1044-B	05991	7	
		11	33			5	29
		12	39	0655-1047-B	05991	5	28
		15	10			6	
0148-1005-T	05991	11	34	0804-0009-L	05991	19	5
		12	40	0818-1015-C	05991	5	14
0148-1006-T	05991	12	41	100 A/RS	08808	1	22
0148-1007-T	05991	12	43	152-5006-80-200	11416	1	10
0148-1010-T	05991	10	35	1586A13	39428	1	11
		11	35	206-4	11237	9	46
		12	42			13	19
		14	9	210372	19234	14	7
		15	12	2395-1	03972	1	5
0148-1011-T	05991	9	47	2661	83330	4	29
0148-1012-T	05991	9	48	3001-24-69	14604	1	46
0148-1013-T	05991	9	49	40A15	08808	1	21
0148-1017-T	05991	8	43	4000-1555-B	05991	9	9
		9	51	40-882	88750	1	19

SECTION IV**NATIONAL STOCK NUMBER AND PART NUMBER INDEX****TM 5-6680-310-24P**

PART NUMBER	FSCM	FIG. NO.	ITEM NO.	PART NUMBER	FSCM	FIG NO.	ITEM NO.
4332-SP-474	33454	1	30	8DB22-50	81312	4	4
7101-A	09353	11	31	8 EB	71785	1	40
		15	13	9650-G	77969	1	9
		13	20				

By Order of the Secretary of the Army:

Official:

E. C. MEYER
General, United States Army
Chief of Staff

J. C. PENNINGTON
Major General, United States Army
The Adjutant General

DISTRIBUTION:

To be distributed in accordance with DA Form 12-28 Organizational Maintenance Requirements for Detection and Warning Systems, Alarms.

☆U.S. GOVERNMENT PRINTING OFFICE: 1980-665134/2196

RECOMMENDED CHANGES TO EQUIPMENT TECHNICAL PUBLICATIONS



*THEN...JOT DOWN THE
DOPE ABOUT IT ON THIS FORM.
CAREFULLY TEAR IT OUT, FOLD IT
AND DROP IT IN THE MAIL.*

SOMETHING WRONG WITH PUBLICATION

FROM: (PRINT YOUR UNIT'S COMPLETE ADDRESS)

DATE SENT

PUBLICATION NUMBER	PUBLICATION DATE	PUBLICATION TITLE
--------------------	------------------	-------------------

BE EXACT PIN-POINT WHERE IT IS				IN THIS SPACE, TELL WHAT IS WRONG AND WHAT SHOULD BE DONE ABOUT IT.
PAGE NO.	PARA- GRAPH	FIGURE NO.	TABLE NO.	

PRINTED NAME, GRADE OR TITLE AND TELEPHONE NUMBER	SIGN HERE
---	-----------

The Metric System and Equivalents

Linear Measure

1 centimeter = 10 millimeters = .39 inch
 1 decimeter = 10 centimeters = 3.94 inches
 1 meter = 10 decimeters = 39.37 inches
 1 dekameter = 10 meters = 32.8 feet
 1 hectometer = 10 dekameters = 328.08 feet
 1 kilometer = 10 hectometers = 3,280.8 feet

Weights

1 centigram = 10 milligrams = .15 grain
 1 decigram = 10 centigrams = 1.54 grains
 1 gram = 10 decigrams = .035 ounce
 1 decagram = 10 grams = .35 ounce
 1 hectogram = 10 decagrams = 3.52 ounces
 1 kilogram = 10 hectograms = 2.2 pounds
 1 quintal = 100 kilograms = 220.46 pounds
 1 metric ton = 10 quintals = 1.1 short tons

Liquid Measure

1 centiliter = 10 milliliters = .34 fl. ounce
 1 deciliter = 10 centiliters = 3.38 fl. ounces
 1 liter = 10 deciliters = 33.81 fl. ounces
 1 dekaliter = 10 liters = 2.64 gallons
 1 hectoliter = 10 dekaliters = 26.42 gallons
 1 kiloliter = 10 hectoliters = 264.18 gallons

Square Measure

1 sq. centimeter = 100 sq. millimeters = .155 sq. inch
 1 sq. decimeter = 100 sq. centimeters = 15.5 sq. inches
 1 sq. meter (centare) = 100 sq. decimeters = 10.76 sq. feet
 1 sq. dekameter (are) = 100 sq. meters = 1,076.4 sq. feet
 1 sq. hectometer (hectare) = 100 sq. dekameters = 2.47 acres
 1 sq. kilometer = 100 sq. hectometers = .386 sq. mile

Cubic Measure

1 cu. centimeter = 1000 cu. millimeters = .06 cu. inch
 1 cu. decimeter = 1000 cu. centimeters = 61.02 cu. inches
 1 cu. meter = 1000 cu. decimeters = 35.31 cu. feet

Approximate Conversion Factors

To change	To	Multiply by	To change	To	Multiply by
inches	centimeters	2.540	ounce-inches	Newton-meters	.007062
feet	meters	.305	centimeters	inches	.394
yards	meters	.914	meters	feet	3.280
miles	kilometers	1.609	meters	yards	1.094
square inches	square centimeters	6.451	kilometers	miles	.621
square feet	square meters	.093	square centimeters	square inches	.155
square yards	square meters	.836	square meters	square feet	10.764
square miles	square kilometers	2.590	square meters	square yards	1.196
acres	square hectometers	.405	square kilometers	square miles	.386
cubic feet	cubic meters	.028	square hectometers	acres	2.471
cubic yards	cubic meters	.765	cubic meters	cubic feet	35.315
fluid ounces	milliliters	29.573	cubic meters	cubic yards	1.308
pints	liters	.473	milliliters	fluid ounces	.034
quarts	liters	.946	liters	pints	2.113
gallons	liters	3.785	liters	quarts	1.057
ounces	grams	28.349	liters	gallons	.264
pounds	kilograms	.454	grams	ounces	.035
short tons	metric tons	.907	kilograms	pounds	2.205
pound-feet	Newton-meters	1.356	metric tons	short tons	1.102
pound-inches	Newton-meters	.11296			

Temperature (Exact)

°F	Fahrenheit temperature	5/9 (after subtracting 32)	Celsius temperature	°C
----	------------------------	----------------------------	---------------------	----

